

JOHN PAUL MITCHELL SYSTEMS.

# *PRODUCT GUIDE*



# *we are* **JPMMS™**



Co-founders John Paul DeJoria  
and Paul Mitchell



President Jason Yates and CEO Michaeline DeJoria

We know that great tools are essential to supporting great talent, and that's why we've dedicated our business to developing the best in professional hair care products. Using the highest-quality ingredients and the latest technologies, every one of our innovative contributions is made with both hairdresser and client in mind, working to best complement their needs.

## **TABLE OF CONTENTS**

**p.04** *Paul Mitchell®  
Professional Hair Color*

**p.38** *Paul Mitchell®  
Pro Tools™*

**p.54** *Awapuhi Wild Ginger®*

**p.64** *MVRCK®*

**p.72** *Neuro™ Liquid*

**INTERESTED IN PURCHASING?**

**p.14** *Paul Mitchell®*

**p.44** *Tea Tree*

**p.60** *MITCH®*

**p.68** *Neuro® Tools*

**p.74** *Regenerative Roots*

*we are*  
**PRODUCT**



**PAUL MITCHELL**  
PROFESSIONAL HAIR COLOR

## Create Every Shade of **GORGEOUS**

- COLOR PORTFOLIO WITH MORE THAN 300 SHADES
- VERSATILE PRODUCTS TO SUPPORT COLOR SERVICES
- EXCEPTIONAL CONDITION, BRILLIANCE & SHINE
- UNMATCHED EDUCATION TO INSPIRE
- COMMITTED TO KEEPING COLOR IN THE SALON

Paul Mitchell® Professional Hair Color offers one of the most robust color portfolios in the industry, with semi-, demi-, permanent and bleaching options. As the heart of every salon business, color increases guest loyalty and keeps them coming back for the beautiful, reliable results they expect and love.

[Learn more](#)

[INTERESTED IN PURCHASING?](#)

*we are*  
**PRODUCT**



## PERMANENT HAIR COLOR

### COLOR XG®

Permanent Cream Hair Color

- 115+ specially curated vegan shades for every need
- A matching demi-permanent cream color, Crema XG®, is now available to seamlessly pair with your Color XG® permanent formula to refresh ends, lowlight, tone and more
- Offers the perfect fusion of coverage, reliability and healthy-looking shine
- CoverSmart dedicated gray coverage series for 100% durable coverage on gray, white and resistant hair
- Pure XG Protection System with cottonseed oil and rice milk leaves hair shiny and healthy-looking
- DyeSmart® System ensures maximum color penetration, greater longevity and brilliant vibrancy
- A selection of vibrant Intensifiers and 1 Clear Booster for unlimited formulation variations
- Mixing ratio: 1:1 with Paul Mitchell® Cream Developer

SIZE (OZ): 3

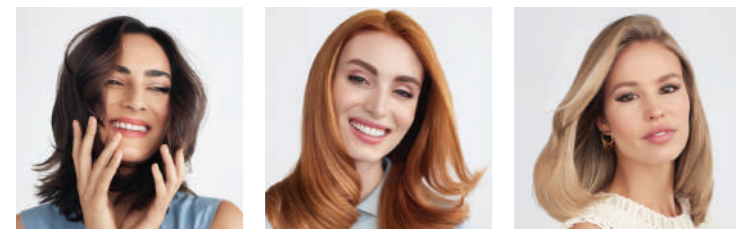


## PAUL MITCHELL® THE COLOR

Permanent Cream Hair Color

- Low ammonia imparts less structural damage to the hair, providing a smoother, healthier, longer-lasting result
- Natural beeswax base delivers healthy, conditioned hair with outstanding shine and manageability
- Over 100 pre-blended shade options for easy color selection
- Two dedicated gray coverage series: Chocolate Plus and N Plus provide up to 100% gray coverage with natural-looking end results
- Unique ChromaLuxe™ technology delivers vibrant color, increased shine and condition
- Can be used as a permanent, demi-permanent, or semi-permanent color by changing the developer, giving stylists maximum value
- Mixing ratio: 1:1 with Paul Mitchell® Cream or Clear Developer

SIZE (OZ): 3



SUSTAINABLE  
BEESWAX BASE

## DEMI-PERMANENT HAIR COLOR

### CREMA XG®

Demi-Permanent Cream Hair Color

- More than 40 shades that are perfectly shade-matched to Color XG®
- Vegan, no-ammonia color formula featuring the Pure XG Protection System with cottonseed oil and rice milk
- DyeSmart® System ensures maximum color penetration
- Opaque coverage is ideal for a wide variety of services: toning blondes, color refresh, gray blending, top coat, adding shine and more
- Mixing ratio: 1:1 with 10 volume Paul Mitchell® Cream Developer

SIZE (OZ): 3



## THE DEMI

Demi-Permanent  
Liquid Hair Color

- Full shade range with 45+ standard shades + Muted Metallics, 3 Flash Toners and 1 Clear
- Ideal for toning, refining and refreshing color
- Deposit-only color lasts up to 4-6 weeks
- Ammonia and MEA-free vegan color is gentle and offers outstanding conditioning
- Easy-to-formulate, intermixable shades can be opaque or translucent
- Great guest experience with gorgeous results
- Mixing ratio: 1:1 with Paul Mitchell® Processing Liquid

SIZE (OZ): 2





## SEMI-PERMANENT



### POP XG™

Vibrant Semi-Permanent Cream Color

- Rich, conditioning cream base for controlled application that delivers soft, shiny results
- Intermixable electric and pastel shades with unlimited formulation variations
- Best for stylists seeking an easy-to-use semi-permanent color for fun, fashionable looks
- No developer required

SIZE (OZ): 6



\*Royal Purple available in the U.S. only



### INKWORKS®

Semi-Permanent Hair Color

- A vibrant color family for bright, vivid hair
- All colors are intermixable for unlimited creativity
- Can be used as a vibrant, pure tone on pre-lightened hair or to add an "aura" of color on natural hair
- No developer required

SIZE (OZ): 4.2

## TEXTURE



### PAUL MITCHELL® PERMANENT WAVES

Acid, Alkaline and Exothermic Formulas

- Three perm formulas create the right wave for the right client
  - Acid: Ideal for tinted and 50% highlighted hair
  - Alkaline: Ideal for resistant, normal, gray and white hair
  - Exothermic: Ideal for resistant, normal and fine hair
- Thio-free formula helps reduce skin irritation and diminishes the traditional perm odor
- Best for stylists looking for formulas that leave the hair in excellent condition with reduced risk of over-processing



### THE RELAXER™

Retexturizing System

- Rich, cream-base formula provides just the right amount of curl reduction to all hair types
- Innovative formula penetrates quickly and greatly reduces reversion
- Best for stylists looking for an easy-to-apply, easy-to-rinse relaxer with a fresh, clean fragrance and beautiful, conditioned results

SIZE (OZ): 30

## ADDITIONAL COLOR SUPPORT



### COLOR PROTECT® POST COLOR SHAMPOO

Professional Use Only

- Gently and effectively removes all color product from the hair and stops the oxidation process, ensuring true color results
- Fennel extract is a naturally derived "peroxide scavenger" that helps stop oxidation
- Balanced combination of surfactants gently removes all color product from the hair and helps eliminate scalp irritation after processing

SIZE (OZ): 33.8



### WIPE OUT®

Liquid Color Remover

- Removes color stains from skin
- Apply liquid remover to cotton or a clean towel, then rub skin gently to remove color stains
- Gentle formula won't irritate sensitive skin

SIZE (OZ): 8.5

## DEVELOPERS



### CLEAR DEVELOPERS

- Recommended for use with Paul Mitchell® the color for a loose mixed viscosity
- Available in 5, 10, 20, 30 and 40 volumes

SIZE (OZ): 33.8



### CREAM DEVELOPERS

- Intermixable with Color XG®, Crema XG®, Paul Mitchell® lighteners and Paul Mitchell® the color
- Available in 5, 10, 20, 30 and 40 volumes

SIZE (OZ): 33.8



### PAUL MITCHELL® PROCESSING LIQUID

- Ideal partner for The Demi demi-permanent hair color
- Please refer to our website, paper charts or swatch books for mixing and formulation guidelines

SIZES (OZ): 16.9, 33.8

we are  
**PRODUCT**

## COMPLETE COLOR LIST

Please mark your quantities to the left of each color.

### PERMANENT CREAM HAIR COLOR

PAUL MITCHELL  
**the color**  
permanent cream hair color

<b>GRAY COVERAGE</b>	<b>THE NATURALS</b>	<b>THE NATURAL ASHES</b>	<b>THE PEARL NATURALS</b>	<b>THE GOLDS</b>	<b>THE NEUTRAL BEIGES</b>	<b>THE REDS</b>
	..... 1N	..... 3NA	..... 5PN	..... 4G	..... 5NB	..... 4R
<b>NEUTRAL+</b>	..... 2N	..... 5NA	..... 6PN	..... 5G	..... 6NB	..... 5R
..... 3N+	..... 3N	..... 7NA	..... 7PN	..... 6G	..... 7NB	..... 6R
..... 4N+	..... 4N		..... 8PN	..... 7G	..... 8NB	..... 8R
..... 5N+	..... 5N	<b>THE ASHES</b>		..... 8G	..... 9NB	..... 5RO
..... 6N+	..... 6N	..... 1A	<b>THE COOLS</b>	..... 9G	..... 10NB	..... 7RB
..... 7N+	..... 7N	..... 3A	..... 5CB	..... 10G	..... HNLB	..... 4WM
..... 8N+	..... 8N	..... 4A	..... 6CB	<b>THE WARM BEIGES</b>	..... UTNB	..... 5WM
..... 9N+	..... 9N	..... 5A	..... 7CB	..... 5WB		..... 4CM
<b>CHOCOLATE+</b>	..... HLN	..... 6A	..... 8CB	..... 6WB	<b>ASH BLUE</b>	..... 5CM
..... 4CH+	..... UTN	..... 7A	..... 9CB	..... 7WB	..... 5Ab	..... 6CM
..... 5CH+		..... 8A	..... 10CB	..... 8WB	..... 6Ab	..... 5WC
..... 6CH+	<b>THE NEUTRAL NEUTRALS</b>	..... 9A	..... 7P	..... 9WB	..... 7Ab	..... 6WC
..... 7CH+	..... 2NN	..... 10A	..... 9P	..... 10WB		..... 7WC
..... 8CH+	..... 3NN	..... HLA	..... HLP			..... 8WC
..... 9CH+	..... 4NN	..... UTA	..... UTP			..... 4VR
	..... 5NN					
	..... 6NN					

PAUL MITCHELL  
**COLOR XG**  
Permanent cream hair color

<b>COVERSMART</b>	<b>NATURAL</b>	<b>NATURAL BROWN</b>	<b>RED ORANGE</b>	<b>VIOLET RED</b>	<b>PLATINUM</b>	<b>MATTE</b>	<b>BROWN ASH</b>
<b>NATURAL NATURAL</b>	..... 1N (1/0)	..... 4NB (4/07)	..... 5RO (5/43)	..... 3VR (3/64)	..... 7P (7/86)	..... 6MT (6/2)	..... 4BA (4/71)
..... 33NN (33/00)	..... 2N (2/0)	..... 5NB (5/07)	..... 6RO (6/43)	..... 5VR (5/64)	..... 9P (9/86)	..... 7MT (7/2)	..... 5BA (5/71)
..... 44NN (44/00)	..... 3N (3/0)	..... 6NB (6/07)	..... 7RO (7/43)		..... 10P (10/86)		..... 6BA (6/71)
..... 55NN (55/00)	..... 4N (4/0)	..... 7NB (7/07)		<b>VIOLET</b>	..... HLP	<b>ASH</b>	..... 7BA (7/71)
..... 66NN (66/00)	..... 5N (5/0)	..... 8NB (8/07)	<b>RED</b>	..... 4V (4/6)	..... UTP		<b>INTENSIFIERS</b>
..... 77NN (77/00)	..... 6N (6/0)	..... 9NB (9/07)	..... 5R (5/4)	..... 6V (6/6)	<b>PEARL NATURAL</b>	..... 4A (4/1)	..... ORANGE /34
..... 88NN (88/00)	..... 7N (7/0)	..... 10NB (10/07)	..... 6R (6/4)	..... 7V (7/6)	..... 6PN (6/80)	..... 5A (5/1)	..... RED /44
..... 99NN (99/00)	..... 8N (8/0)		..... 7R (7/4)	..... 9V (9/6)	..... 7PN (7/80)	..... 6A (6/1)	..... BLUE /88
<b>BROWN ASH</b>	..... 9N (9/0)	<b>GOLD</b>	<b>RED BROWN</b>	..... UTV	..... 8PN (8/80)	..... 7A (7/1)	..... VIOLET /66
..... 44BA (44/71)	..... 10N (10/0)	..... 4G (4/3)	..... 4RB (4/47)	<b>VIOLET GOLD</b>	..... 9PN (9/80)	..... 8A (8/1)	..... CLEAR BOOSTER
..... 66BA (66/71)	..... HLN	..... 5G (5/3)	..... 5RB (5/47)	..... 5VG (5/63)	..... 10PN (10/80)	..... 9A (9/1)	
..... 88BA (88/71)	..... UTN	..... 6G (6/3)	..... 6RB (6/47)	..... 7VG (7/63)	..... HLPN	..... 10A (10/1)	
<b>NATURAL GOLD</b>	<b>NATURAL NATURAL</b>	..... 7G (7/3)	..... 7RB (7/47)	..... 9VG (9/63)	..... UTA		
..... 55NG (55/03)	..... 4NN (4/00)	..... 8G (8/3)	<b>RED VIOLET</b>	<b>PEARL ASH</b>	..... 1AA (1/11)		
..... 77NG (77/03)	..... 5NN (5/00)	..... 9G (9/3)	..... 4RV (4/46)	..... 4PA (4/81)	..... 4AA (4/11)		
..... 99NG (99/03)	..... 6NN (6/00)	..... 10G (10/3)	..... 5RV (5/46)	..... 6PA (6/81)	..... 6AA (6/11)		
<b>COPPER</b>	..... 7NN (7/00)	<b>COPPER</b>	..... 6RV (6/46)	..... 8PA (8/81)	..... 8AA (8/11)		
..... 55C (55/34)	..... 8NN (8/00)	..... 4C (4/34)		..... 10PA (10/81)	..... 10AA (10/11)		
..... 77C (77/34)	..... 9NN (9/00)	..... 6C (6/34)		..... HLPN			
<b>RED</b>	<b>GOLD BROWN</b>	..... 7C (7/34)		..... UTPN			
..... 44R (44/4)	..... 6GB (6/37)	..... 8C (8/34)					
..... 66R (66/4)	..... 7GB (7/37)						
	..... 9GB (9/37)						

### DEMI-PERMANENT HAIR COLOR

PAUL MITCHELL  
**CREMA XG**  
Demi-permanent cream hair color

<b>NATURAL</b>	<b>BROWN ASH</b>	<b>RED ORANGE</b>
..... 2N (2/0)	..... 4BA (4/71)	..... 7RO (7/43)
..... 3N (3/0)	..... 5BA (5/71)	..... 8RO (8/43)
..... 4N (4/0)	..... 6BA (6/71)	<b>RED</b>
..... 5N (5/0)	..... 7BA (7/71)	..... 5R (5/4)
..... 6N (6/0)		..... 6R (6/4)
..... 7N (7/0)	<b>ASH</b>	<b>GOLD</b>
..... 8N (8/0)	..... 6A (6/1)	..... 5G (5/3)
..... 9N (9/0)	..... 8A (8/1)	..... 7G (7/3)
..... 10N (10/0)	..... 10A (10/1)	..... 9G (9/3)
<b>NATURAL NATURAL</b>	<b>ASH ASH</b>	<b>RED BROWN</b>
..... 5NN (5/00)	..... 1AA (1/11)	..... 4RB (4/47)
..... 7NN (7/00)	..... 4AA (4/11)	..... 6RB (6/47)
..... 9NN (9/00)	..... 6AA (6/11)	<b>VIOLET RED</b>
<b>NATURAL BROWN</b>	<b>PEARL ASH</b>	..... 3VR (3/64)
..... 6NB (6/07)	..... 7PA (7/81)	..... 5VR (5/64)
..... 7NB (7/07)	..... 8PA (8/81)	<b>VIOLET</b>
..... 8NB (8/07)	..... 10PA (10/81)	..... 6V (6/6)
<b>PEARL NATURAL</b>	<b>PLATINUM</b>	..... 8V (8/6)
..... 7PN (7/80)	..... 8P (8/86)	..... 10V (10/6)
..... 8PN (8/80)	..... 10P (10/86)	<b>ADDITIVE</b>
		..... CLEAR

the  
demi  
permanent  
hair color

<b>NATURAL</b>	<b>BLUE VIOLET</b>	<b>NATURAL BEIGE</b>	<b>MUTED METALLICS</b>
..... 1N (1/0)	..... 3BV (3/08)	..... 4NB (4/07)	..... Rose Gold
..... 3N (3/0)	..... 6BV (6/08)	..... 5NB (5/07)	..... Lavender
..... 4N (4/0)	..... 9BV (9/08)	..... 6NB (6/07)	..... Silver
..... 5N (5/0)	..... 10BV (10/08)	..... 7NB (7/07)	..... Evening Jade
..... 6N (6/0)		..... 8NB (8/07)	<b>FLASH TONERS</b>
..... 7N (7/0)	<b>MATTE</b>	..... 9NB (9/07)	..... Brass-Free Violet
..... 8N (8/0)	..... 6MT (6/2)	..... 10NB (10/07)	..... Brass-Free Blue
..... 9N (9/0)	..... 8MT (8/2)		..... Neutral Beige
	..... 9MT (9/2)	<b>ASH ASH</b>	<b>PEARL</b>
<b>RED</b>	<b>PEARL ASH</b>	..... 1AA (1/11)	..... 7P (7/8)
..... 3R (3/4)	..... 7PA (7/81)	..... 6AA (6/11)	..... 9P (9/8)
..... 6R (6/4)	..... 8PA (8/81)	..... 10AA (10/11)	..... 10P (10/8)
..... 9R (9/4)	..... 9PA (9/81)	<b>GOLD</b>	<b>NATURAL COPPER</b>
<b>VIOLET RED</b>	..... 10PA (10/81)	..... 3G (3/03)	..... 7NC (7/043)
..... 3VR (3/64)	<b>ASH</b>	..... 6G (6/03)	
..... 6VR (6/64)	..... 3A (3/1)	..... 9G (9/03)	<b>COPPER</b>
<b>VIOLET</b>	..... 6A (6/1)	<b>ORANGE RED</b>	..... 6C (6/43)
..... 3V (3/6)	..... 9A (9/1)	..... 3OR (3/34)	<b>COMING SUMMER 2023</b>
..... 6V (6/6)	..... 10A (10/1)	..... 6OR (6/34)	<b>GOLD VIOLET</b>
..... 9V (9/6)		..... 9OR (9/34)	..... 10GV (10/036)
..... 10V (10/6)		..... CLEAR	..... 8GV (8/036)
			..... 6GV (6/036)

### SEMI-PERMANENT HAIR COLOR

PAUL MITCHELL  
**pop XG**  
Semi-permanent hair color

..... Blue	..... Opalescent	..... Red
..... Bordeaux	..... Orange	..... Steel
..... Diluter	..... Pink	..... Teal
..... Green	..... Purple	..... Yellow
..... Midnight	..... Royal Purple*	

\*Royal Purple is only available in the U.S.



we are  
**PRODUCT**

## PAUL MITCHELL® BLONDE



### SYNCHROLIFT®

Ultra-Quick Blue  
Powder Lightener

- Exclusive balanced bleach technology lifts up to 7 levels quickly and gently
- Mixes to a creamy consistency that resists swelling
- Features potato starch and zero fragrance for a pleasant coloring experience

SIZES (OZ): 14.1, 28.2



### SYNCHROLIFT®+

Ultra-Quick Blue  
Powder Lightener

- Gentle, dust-free formula packed with power to achieve up to 9 levels of lift
- Infused with shea, this gentle, enhanced formula helps to soften and condition
- Multifunctional uses for any lightening technique, on or off scalp
- Ideal for on-scalp double process bleaching, off-scalp foil highlighting, hand-painting and any creative technique or color correction
- Mixing ratio:
  - Recommended mixing ratio is 1:2
  - Mix 1 well-rounded scoop of SynchronLift+ with 2 oz. (60 g/ml) of Paul Mitchell® Cream Developer
  - Mix well into a creamy consistency

SIZES (OZ): 14.1, 28.2



### SYNCHROLIFT® SOFT

Gentle Cream Lightener

- Gentle formula achieves up to 7 levels of lift
- Infused with shea, this cream formula helps to soften and condition
- Ideal for any lightening technique on or off scalp
  - On-scalp mixing ratio: 1:1.5 with Paul Mitchell® Cream Developer
  - Off-scalp mixing ratio: 1:1 with Paul Mitchell® Cream Developer

SIZE (OZ): 7.1



### DUAL-PURPOSE LIGHTENER

On- and Off-Scalp  
Powder Lightener

- White, dust-free powder lightener with natural conditioning oils that lifts up to 7 levels
- A versatile lightener for gentle, even lift with control, making it ideal for any lightening technique
- Pleasant fragrance for a comfortable lightening experience
- Ideal for on-scalp double process bleaching, off-scalp foil highlighting, color correction or any creative lightening technique
- Mixing ratio: 1:2 with Paul Mitchell® Cream Developer

SIZES (LB): 1, 2



### SKYLIGHT®

Hand-Painting Clay Lightener

- Hand-painting lightener with up to 7 levels of lift
- Eliminates the need for foils
- Rice flour and kaolin clay help form an instant shell during processing that won't dry out, flake or transfer
- Ideal for all freehand application techniques, including balayage and organic highlights
- Mixing ratio: 1:1.5 with Paul Mitchell® Cream Developer

SIZE (OZ): 14.1



*we are*  
**PRODUCT**



PAUL MITCHELL®

## *Something for* **EVERYONE**

- GLOBAL BRAND RECOGNITION
- INNOVATIVE PRODUCTS
- A LEGACY OF CHARITABLE GIVING
- UNSURPASSED EDUCATION AND BUSINESS-BUILDING SUPPORT
- #1 IN STYLING

An icon of style, Paul Mitchell® is one of the most recognized and respected names in professional hair care. From tried-and-true favorites to modern trendsetters, Paul Mitchell® offers something for every taste and type.

[Learn more](#)

[INTERESTED IN PURCHASING?](#)

John Paul Mitchell Systems® and our distributors are taking action, in a variety of ways, to stop diverters in their tracks and keep our products in the professional beauty industry, where they belong.

 @paulmitchell / #PaulMitchell

*we are*  
**PRODUCT**

## BLONDE

Brighten. Repair. Rebuild.



### FOREVER BLONDE® SHAMPOO

Intense Hydration •  
KerActive Repair

- Gently cleanses lightened and highlighted hair while helping to repair damage and seal the cuticle.
- Enhanced with KerActive protein and a special blend of botanicals to provide intensive nourishment.
- Helps keep blonde hair light, bright and healthy.

**FRAGRANCE:** Revitalizing scent with notes of watery green cucumber, melon, peach and apple.

**SIZES (OZ):** 8.5, 24



### FOREVER BLONDE® CONDITIONER

Intense Hydration •  
KerActive Repair

- Repairs and helps brighten chemically treated blonde hair.
- Deeply hydrates and detangles lightened and highlighted strands.
- KerActive protein and a special blend of botanicals provide intensive nourishment to help improve elasticity, softness and shine.

**FRAGRANCE:** Revitalizing scent with notes of watery green cucumber, melon, peach and apple.

**SIZES (OZ):** 0.25, 6.8, 24



### FOREVER BLONDE® DRAMATIC REPAIR

Intense Hydration •  
KerActive Repair

- Smooths, strengthens and replenishes depleted blonde hair.
- Enhanced with KerActive protein and a special blend of botanicals to provide intensive nourishment.
- Helps penetrate, repair and moisturize hair weakened by lightening or highlighting.

**FRAGRANCE:** Revitalizing scent with notes of watery green cucumber, melon, peach and apple.

**SIZE (OZ):** 5.1



### PLATINUM BLONDE SHAMPOO

Cools Brassiness •  
Eliminates Warmth

- Brings out the best in blonde, highlighted, gray or white hair.
- Helps cool brassy tones in natural blonde and color-treated hair.
- Infused with conditioning ingredients and extracts to hydrate hair and intensify shine.

**FRAGRANCE:** Refreshing cucumber melon scent with soft underlying notes of violet and water flower.

**SIZES (OZ):** 10.14, 33.8, 128



### PLATINUM BLONDE CONDITIONER

Cools Brassiness •  
Eliminates Warmth

- Keeps blonde, highlighted, gray and white hair light, bright and conditioned.
- Helps cool brassy tones in natural blonde and color-treated hair.
- Infused with conditioning ingredients and extracts to hydrate hair and intensify shine.

**FRAGRANCE:** Refreshing cucumber melon scent with soft underlying notes of violet and water flower.

**SIZES (OZ):** 6.8, 33.8, 128



### PLATINUM BLONDE TONING SPRAY

Cools Brassiness •  
Eliminates Warmth

- Helps neutralize yellow tones in blonde, highlighted, gray or white hair.
- Shimmery, violet-tinted pigments help cool brassy tones in natural blonde and color-treated hair.
- Infused with conditioning ingredients and extracts to hydrate hair and intensify shine.

**FRAGRANCE:** Refreshing cucumber melon scent with soft underlying notes of violet and water flower.

**AWARDS + FEATURES:** NewBeauty's 2019 Beauty Choice Award for Best Brass Buster for Blonde Hair.

**SIZE (OZ):** 5.1

## CLARIFYING

Fresh. Deep. Clean.



### SHAMPOO TWO®

Clarifying • Removes Buildup

- Lemony fresh clarifying shampoo deeply cleanses hair and removes dulling buildup.
- Helps minimize oil production so hair becomes less oily over time.
- Color-safe formula leaves hair squeaky-clean, shiny and full of body.

**FRAGRANCE:** Sharp, crisp, energizing lemon scent.

**SIZES (OZ):** 0.25, 10.14, 16.9, 33.8, 128



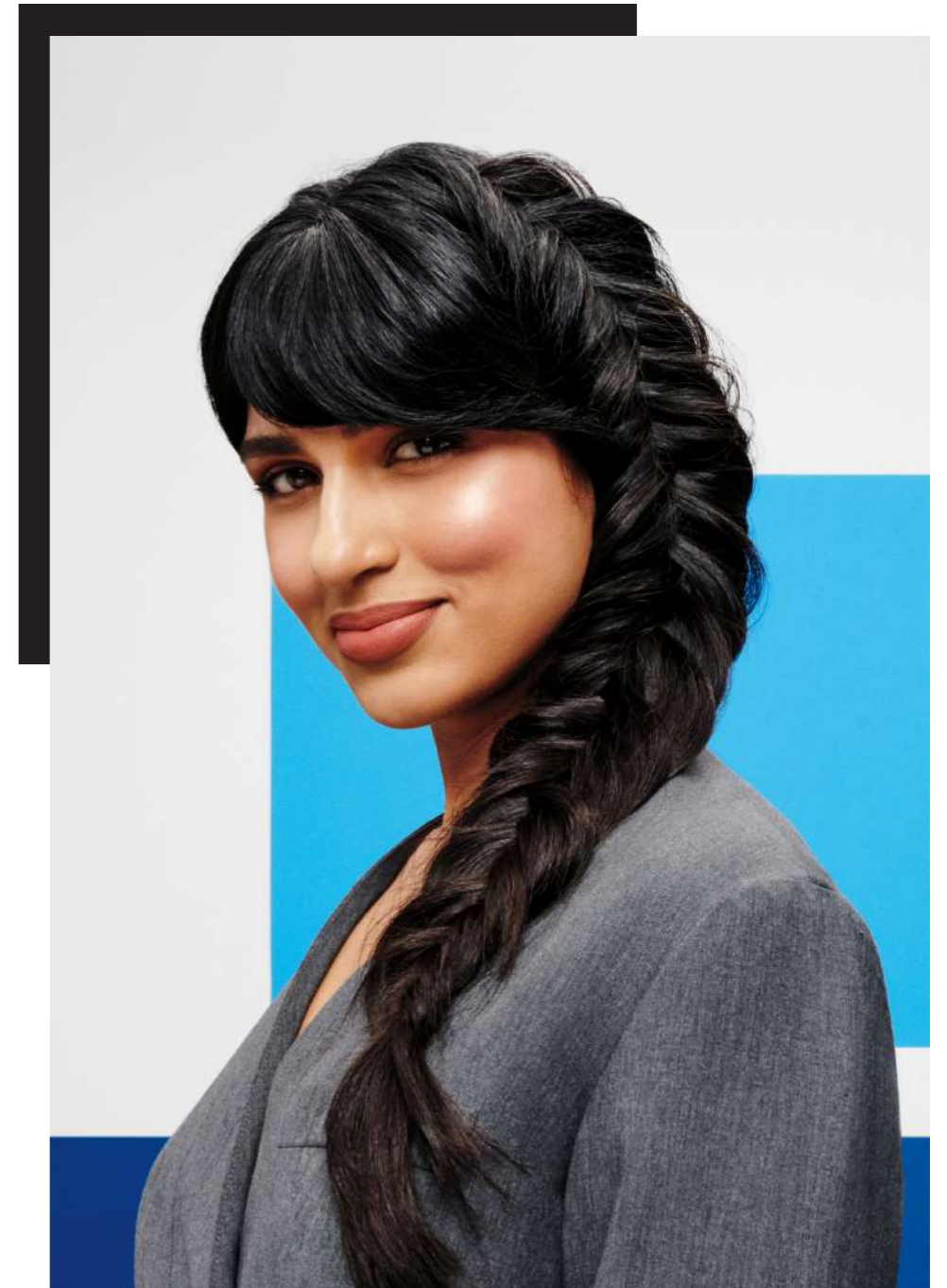
### SHAMPOO THREE®

Clarifying • Removes Chlorine

- Ideal for swimmers, this clarifying shampoo deep cleans hair and removes chlorine and minerals that can turn hair "chlorine green."
- Washes away dulling buildup, strengthens strands and minimizes future buildup.
- Excellent for use before deep conditioning.

**FRAGRANCE:** Vibrant zesty pink grapefruit scent with energizing notes of Valencia orange and orange blossom.

**SIZES (OZ):** 0.25, 10.14, 16.9, 33.8, 128



*we are*  
**PRODUCT**

**PAUL MITCHELL**  
clean beauty 

**CLEAN BEAUTY**

Good for hair. Good for the planet.



\*Formulated with conventional and/or organic botanicals.  
 †Made of bio-based or at least 50% post-consumer recycled plastic. Excluding closures.  
 ‡Excluding closures (caps, sprayers, pumps). Check your local requirements.  
 \*\*Manufacturing of the formulas only.  
 ††Made without SLS, SLES, ALS.



**SCALP**

Made with Grapevine Sap & Chamomile Extract



**SCALP THERAPY SHAMPOO**

Refreshes • Nourishes

- Gentle cleanser can be used daily to refresh the scalp and promote healthy-looking hair.
- Infused with grapevine sap and chamomile extract to help soothe and replenish the scalp.
- Zinc helps rebalance sebum while strengthening and nourishing strands.

Crafted with sustainably sourced ingredients of 87% natural origin that deliver professional results in recyclable, bio-based packaging made from sugarcane.

**FRAGRANCE:** A soft fruit-forward scent with hints of citrus complemented by delicate floral notes and a powdery finish.

**SIZES (OZ):** 8.5, 33.8



**SCALP THERAPY CONDITIONER**

Nourishes • Soothes

- Lightweight nourishing formula provides gentle, cooling relief for a dry, oily or sensitive scalp without weighing hair down.
- Infused with grapevine sap and chamomile extract to help soothe and nourish the scalp.
- Zinc helps rebalance sebum while strengthening strands and refreshing the scalp.

Crafted with sustainably sourced ingredients of 95% natural origin that deliver professional results in recyclable, bio-based packaging made from sugarcane.

**FRAGRANCE:** A soft fruit-forward scent with hints of citrus complemented by delicate floral notes and a powdery finish.

**SIZES (OZ):** 8.5, 33.8



**SCALP THERAPY DROPS**

Targeted Treatment • Restores

- Targeted leave-on treatment can be used daily on wet or dry scalp to help relieve discomfort.
- Infused with grapevine sap and chamomile to help soothe and nourish a dry, oily or sensitive scalp.
- Zinc helps rebalance sebum and gradually restore the scalp.

Crafted with sustainably sourced ingredients of 92% natural origin that deliver professional results in recyclable, bio-based packaging made from sugarcane.

**FRAGRANCE:** A soft fruit-forward scent with hints of citrus complemented by delicate floral notes and a powdery finish.

**SIZE (OZ):** 1.7

new

**HYDRATE**

Made with Olive & Oat Peptide



**HYDRATE SHAMPOO**

Replenishes • Balances Moisture

- Gentle formula cleanses and replenishes dry hair.
- Infused with olive and oat peptide to nourish scalp and hair, helping to restore moisture balance.
- Leaves hair soft and healthy-looking.

Handcrafted with sustainably sourced ingredients of 77% natural origin that deliver professional results in recyclable, bio-based packaging made from sugarcane.

**FRAGRANCE:** Mild floral and earthy scent.

**SIZES (OZ):** 8.5, 33.8



**HYDRATE CONDITIONER**

Intensely Nourishing • Improves Manageability

- Intensely nourishing conditioner hydrates and restores parched hair.
- Infused with olive oil and oat peptide to help maintain hair health and protect from damage.
- Adds manageability and rich shine.

Handcrafted with sustainably sourced ingredients of 92% natural origin that deliver professional results in recyclable, bio-based packaging.

**FRAGRANCE:** Mild floral and earthy scent.

**SIZES (OZ):** 1.7, 8.5, 33.8

we are  
**PRODUCT**

PAUL MITCHELL<sup>®</sup>  
clean beauty 

## EVERYDAY

Made with Argan Oil & Aloe Vera



### EVERYDAY SHAMPOO

Boosts Shine • Adds Bounce

- Gently cleanses hair and scalp, and leaves hair soft and conditioned.
- Infused with argan oil and aloe vera to condition hair while adding bounce and shine.
- An ideal daily shampoo for all hair types.

Handcrafted with sustainably sourced ingredients of 83% natural origin that deliver professional results in recyclable, bio-based packaging made from sugarcane.

**FRAGRANCE:** Mild eucalyptus scent.

**SIZES (OZ):** 8.5, 33.8



### EVERYDAY CONDITIONER

Ultra-Rich • Improves Elasticity

- Ultra-rich formula softens, conditions and leaves hair smooth and manageable.
- Infused with argan oil and aloe vera to condition hair and improve elasticity for a healthy look and feel.
- Light enough for daily use and ideal for all hair types.

Handcrafted with sustainably sourced ingredients of 95% natural origin that deliver professional results in recyclable, bio-based packaging made from sugarcane.

**FRAGRANCE:** Mild eucalyptus scent.

**SIZES (OZ):** 8.5, 33.8



### EVERYDAY LEAVE-IN TREATMENT

Leave-In Conditioner • Delivers Hydration

- Lightweight formula nourishes hair and adds hydration.
- Infused with argan oil and aloe vera, delivering hydration and shine to transform dull hair.
- No-rinse formula leaves hair soft and manageable.

Handcrafted with sustainably sourced ingredients of 90% natural origin that deliver professional results in recyclable, bio-based packaging made from sugarcane.

**FRAGRANCE:** Mild eucalyptus scent.

**SIZE (OZ):** 5.1

## SMOOTH

Made with Almond Oil & Hyaluronic Acid



### ANTI-FRIZZ SHAMPOO

Smooths • Calms Frizz

- Gently cleanses textured, frizz-prone hair.
- Enriched with almond oil and hyaluronic acid to smooth the surface cuticle and help calm frizz.
- Helps make hair more manageable.

Handcrafted with sustainably sourced ingredients of 80% natural origin that deliver professional results in recyclable, bio-based packaging made from sugarcane.

**FRAGRANCE:** Delicate floral scent.

**SIZES (OZ):** 8.5, 33.8



### ANTI-FRIZZ CONDITIONER

Ultra-Rich • Improves Manageability

- Frizz-fighting conditioner helps to soften textured hair.
- Enriched with almond oil and hyaluronic acid to help nourish, hydrate and smooth the hair's surface.
- Ultra-rich formula makes hair more manageable.

Handcrafted with sustainably sourced ingredients of 89% natural origin that deliver professional results in recyclable, bio-based packaging made from sugarcane.

**FRAGRANCE:** Delicate floral scent.

**SIZES (OZ):** 1.7, 8.5, 33.8



### ANTI-FRIZZ LEAVE-IN TREATMENT

Leave-In Conditioner • Anti-Humidity

- Frizz-fighting leave-in treatment helps to smooth textured hair.
- Enriched with almond oil and hyaluronic acid to help control frizz and protect against humidity.
- Makes hair more manageable and easier to style.

Handcrafted with sustainably sourced ingredients of 86% natural origin that deliver professional results in recyclable, bio-based packaging made from sugarcane.

**FRAGRANCE:** Delicate floral scent.

**SIZE (OZ):** 5.1

## STYLE

Made with Flax Seed and Ferulic Acid



### HEAT STYLING SPRAY

Shine & Thermal Protection

- Helps protect hair during heat styling while adding light hold and natural shine.
- Infused with flax seed and ferulic acid to nourish and shield fragile hair.
- Perfect blow-dry prep for polished styles with movement and flexible control.

Crafted with sustainably sourced ingredients of 93% natural origin that deliver professional results in recyclable, bio-based packaging made from sugarcane.

**FRAGRANCE:** Subtle apple scent.

**SIZE (OZ):** 1.7



### REPAIR SHAMPOO

Strengthens • Protects

- Rich shampoo helps to repair and protect strands while it washes away dirt and buildup.
- Made with amaranth extract and pea protein to help strengthen damaged, brittle hair.
- Helps protect strands from further damage.

Handcrafted with sustainably sourced ingredients of 79% natural origin that deliver professional results in recyclable, bio-based packaging made from sugarcane.

**FRAGRANCE:** Delicate floral musk scent.

**SIZES (OZ):** 8.5, 33.8



### REPAIR CONDITIONER

Strengthens • Balances Moisture

- Reconstructing formula helps protect hair from physical and chemical damage.
- Made with amaranth extract and pea protein to help strengthen and balance moisture.
- Rich consistency makes detangling a breeze.

Handcrafted with sustainably sourced ingredients of 90% natural origin that deliver professional results in recyclable, bio-based packaging made from sugarcane.

**FRAGRANCE:** Delicate floral musk scent.

**SIZES (OZ):** 1.7, 8.5, 33.8



### REPAIR LEAVE-IN TREATMENT

Leave-In Conditioner • Restores

- Leave-in treatment helps to repair weakened hair.
- Made with amaranth extract and pea protein to help strengthen the hair fiber and restore hair back to health.
- Leaves hair soft, shiny and easy to comb.

Handcrafted with sustainably sourced ingredients of 83% natural origin that deliver professional results in recyclable, bio-based packaging made from sugarcane.

**FRAGRANCE:** Delicate floral musk scent.

**SIZE (OZ):** 5.1



### VOLUMIZING LIQUID

Prime & Volumize

- Gives fine hair a boost of volume, style memory and shine.
- Infused with flax seed and ferulic acid to nourish and protect strands.
- Makes a great blowout primer for longer-lasting style.

Crafted with sustainably sourced ingredients of 84% natural origin that deliver professional results in recyclable, bio-based packaging made from sugarcane.

**FRAGRANCE:** Subtle apple scent.

**SIZE (OZ):** 3.4



### STYLING CREAM

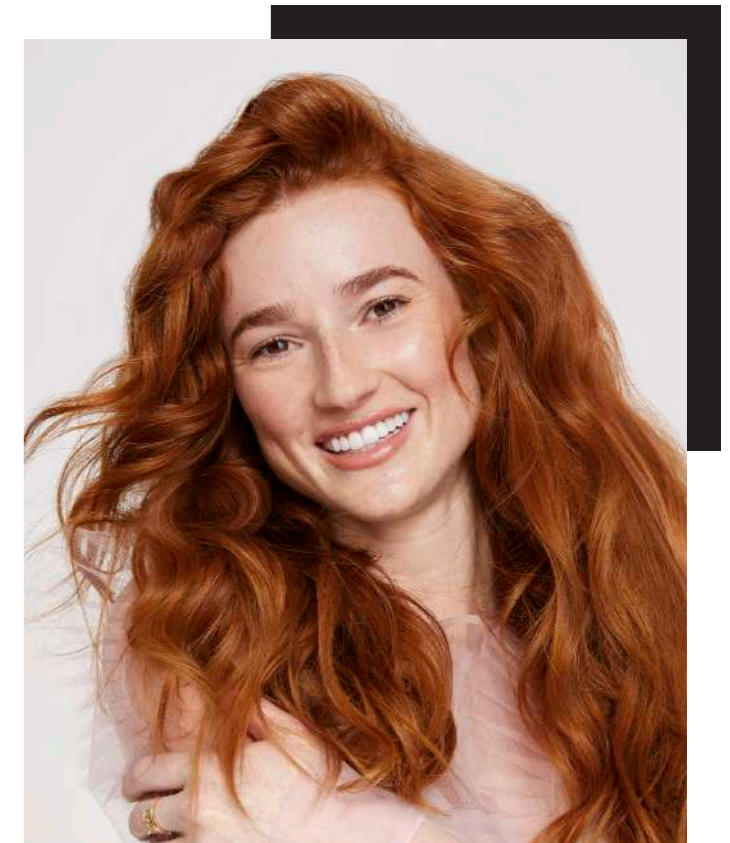
Smooth & Style

- Versatile styling cream softens, smooths and seals hair.
- Infused with flax seed and ferulic acid to strengthen and protect hair.
- Lightweight formula delivers memory and control with a clean, touchable feel.

Crafted with sustainably sourced ingredients of 88% natural origin that deliver professional results in recyclable, bio-based packaging made from sugarcane.

**FRAGRANCE:** Subtle apple scent.

**SIZE (OZ):** 3.4



we are  
**PRODUCT**

## COLOR PROTECT®

Protected. Healthy. Conditioned.



### COLOR PROTECT® SHAMPOO

Preserves Color •  
Added Protection

- Cleanses color-treated hair while it strengthens strands and boosts shine.
- Infused with sunflower extract to help protect hair from sun damage and keep color from fading.
- Conditioning extracts moisturize hair and boost shine.

**FRAGRANCE:** Refreshingly energetic scent with bright notes of orange, apple, bergamot and crisp leafy greens.

**SIZES (OZ):** 0.25, 10.14, 16.9, 33.8, 128



### COLOR PROTECT® CONDITIONER

Preserves Color •  
Added Protection

- Detangles and soothes color-treated hair so strands look and feel soft and hydrated.
- Infused with sunflower extract to help protect hair from sun damage and keep color from fading.
- Conditioning extracts moisturize hair and boost shine.

**FRAGRANCE:** Refreshingly energetic scent with bright notes of orange, apple, bergamot and crisp leafy greens.

**SIZES (OZ):** 0.25, 10.14, 16.9, 33.8, 128



### COLOR PROTECT® TREATMENT

Intense Repair •  
Added Protection

- Intensive hair mask repairs, conditions and hydrates color-treated hair.
- Helps prevent breakage and reduce split ends.
- Sunflower extract helps protect hair from sun damage and helps color last longer while conditioning extracts leave strands hydrated and shiny.

**FRAGRANCE:** Refreshingly energetic scent with bright notes of orange, apple, bergamot and crisp leafy greens.

**SIZES (OZ):** 0.25, 5.1



### COLOR PROTECT® LOCKING SPRAY

Preserves Color •  
Added Protection

- Leave-in conditioner makes color-treated hair look conditioned and super shiny while it locks in and extends the life of hair color.
- Infused with sunflower extract to help protect hair from sun damage and keep color from fading.
- Conditioning extracts moisturize hair and boost shine.

**FRAGRANCE:** Refreshingly energetic scent with bright notes of orange, apple, bergamot and crisp leafy greens.

**SIZE (OZ):** 8.5

## CURLS

Define. Fight Frizz. Detangle.



### SPRING LOADED® FRIZZ-FIGHTING SHAMPOO

Cleanses Curls • Tames Frizz

- Ultra-calming, color-safe formula fights frizz and enhances curls.
- Mild, soothing shampoo for curly hair gently cleanses curls without roughing up the cuticle to fight frizz from the start.
- The rich lather leaves hair soft and manageable so curls always look their best.

**FRAGRANCE:** Playful tropical scent with notes of mango, citrus and green apple.

**SIZES (OZ):** 8.5, 24



### SPRING LOADED® FRIZZ-FIGHTING CONDITIONER

Detangles Curls • Tames Frizz

- Made especially for curly hair to leave curls smooth, soft and frizz-free.
- Creamy rinse-out conditioner tackles tangles to make combing wet hair a breeze.
- Hydrating formula replenishes moisture with jojoba and natural extracts.

**FRAGRANCE:** Playful tropical scent with notes of mango, citrus and green apple.

**SIZES (OZ):** 6.8, 24



### FULL CIRCLE LEAVE-IN TREATMENT®

Hydrates Curls • Controls Frizz

- Creamy leave-in conditioning treatment helps replenish every curl.
- Detangles, tames frizz and hydrates hair.
- Lightweight formula won't weigh curly hair down.

**FRAGRANCE:** Playful tropical scent with notes of mango, citrus and green apple.

**SIZE (OZ):** 6.8



### TWIRL AROUND®

Defines Curls • Eliminates Frizz

- Cream-gel styler defines, separates and enhances curls and waves.
- Dual formula of hydrating cream and smoothing gel creates soft, touchable, frizz-free spirals.
- Helps curls retain their shape and bounce all day long without getting crunchy or stiff.

**FRAGRANCE:** Vibrant citrus scent with outstanding notes of lemon, pineapple and pink grapefruit.

**SIZE (OZ):** 5.1



### ULTIMATE WAVE®

Enhances Waves •  
Eliminates Frizz

- Forms, separates and adds texture to create perfectly imperfect hairstyles.
- Humidity-resistant gel contains soothing and smoothing mushroom extract to fight frizz.
- Made especially for naturally wavy and curly hair.

**FRAGRANCE:** Vibrant citrus scent with outstanding notes of lemon, pineapple and pink grapefruit.

**SIZE (OZ):** 6.8

## **EXTRA-BODY**

Lush. Full. Bouncy.



### **EXTRA-BODY SHAMPOO**

Thickens • Volumizes

- Body-building shampoo gently cleanses and adds volume to fine hair.
- Contains panthenol to boost volume and help repair damaged hair.
- Helps protect strands and leaves hair silky-smooth.

**FRAGRANCE:** Vibrant, crisp apple scent.

**SIZES (OZ):** 0.25, 3.4, 10.14, 16.9, 33.8, 128



### **EXTRA-BODY CONDITIONER**

Lightweight Rinse • Detangles

- Body-building formula gently conditions, detangles, and adds volume to fine hair.
- Contains panthenol to boost volume and help repair damaged hair.
- Helps protect strands and leaves hair silky-smooth.

**FRAGRANCE:** Vibrant, crisp apple scent.

**SIZES (OZ):** 0.25, 3.4, 10.14, 16.9, 33.8, 128



### **EXTRA-BODY BOOST**

Root Lifter • Controlled Volume

- Prep hair for big style with this body-boosting spray.
- Gives fine hair a boost of volume at the roots.
- Contains panthenol to add volume and thickness.

**FRAGRANCE:** Green herbal scent infused with lily of the valley and water fruits.

**SIZES (OZ):** 3.4, 8.5, 16.9



### **EXTRA-BODY SCULPTING GEL\***

Thickening Gel • Builds Body

- Adds volume and control to any hairstyle.
- Body-building hair gel contains thickening ingredients that add fullness to fine hair.
- Flexible hold allows for touchable, brushable hair without stickiness or flaking.

**FRAGRANCE:** A complex citrus herbal scent with energizing notes of lemon and neroli and additional calming notes of chamomile, peony and rose.

**SIZES (OZ):** 0.25, 6.8, 16.9



### **EXTRA-BODY SCULPTING FOAM\***

Thickening Foam • Builds Body

- Body-building mousse adds lush volume, fullness and control.
- Thickening formula contains conditioning ingredients to amplify shine and lock in moisture.
- Ideal for fine hair.

**FRAGRANCE:** A complex citrus herbal scent with energizing notes of lemon and neroli and additional calming notes of chamomile, peony and rose.

**SIZES (OZ):** 2, 6.7, 16.9



### **THICKEN UP\***

Thickening Styler • Builds Body

- Body-building styling liquid makes thin strands look and feel thicker without a heavy product feel.
- Adds definition with softness and shine.
- UV protection helps shield hair from damaging UV rays.

**FRAGRANCE:** Luscious berry blend of red raspberry, strawberry puree and tropical fruit.

**SIZES (OZ):** 0.25, 6.8



### **EXTRA-BODY FINISHING SPRAY\***

Flexible Hold • Maximum Volume

- Fast-drying, volumizing hairspray delivers flexible hold.
- Contains panthenol and hydrolyzed wheat protein to build body and add volume, so hair looks and feels thicker.
- Humidity-resistant formula secures hard-to-hold hair while fighting frizz and adding shine.

**FRAGRANCE:** Vibrant, crisp apple scent.

**SIZES (OZ):** 3.7, 9.5



### **EXTRA-BODY FIRM FINISHING SPRAY\***

Extreme Hold • Maximum Volume

- Intense finishing hairspray contains thickening agents to boost volume and lock in styles.
- Provides all-day hold and maximum volume with high shine, fullness and texture.
- Formulated with humidity-resistant ingredients to fight frizz in any climate.

**FRAGRANCE:** Vibrant, crisp apple scent.

**SIZES (OZ):** 3.8, 9.5

## **INSTANT MOISTURE®**

Hydrated. Revived. Replenished.



### **INSTANT MOISTURE® SHAMPOO**

Hydrates • Revives

- Instantly hydrates and cleanses dry hair with a color-safe formula that adds body and helps repair damage from the inside out.
- Contains panthenol and jojoba to help strengthen and hydrate moisture-loving strands.
- Instant Moisture® Complex provides superior conditioning and UV protection helps shield vulnerable hair from the sun.

**FRAGRANCE:** Fresh energetic notes of lemon and orange blended with subtle lavender and aromatic mint.

**SIZES (OZ):** 0.25, 10.14, 16.9, 33.8, 128



### **INSTANT MOISTURE® CONDITIONER**

Hydrates • Revives

- Instantly hydrates and detangles moisture-loving strands, making dry hair shiny and manageable while strengthening the cuticle and improving elasticity.
- Contains soy proteins and shea butter to help strengthen and moisturize dry strands.
- Instant Moisture® Complex provides superior conditioning and UV protection helps shield vulnerable hair from the sun.

**FRAGRANCE:** Fresh energetic notes of lemon and orange blended with subtle lavender and aromatic mint.

**SIZES (OZ):** 0.25, 6.8, 33.8, 128



### **SUPER-CHARGED TREATMENT**

Intense Hydration • Ultra Rich

- Ultra-rich deep conditioning treatment delivers an intense dose of moisture for dehydrated hair while boosting shine and improving elasticity.
- Panthenol, soy proteins and vitamin E provide hydration and protection.
- Use as a weekly hair mask to make hair look and feel healthier and more manageable.

**FRAGRANCE:** Refreshing herbal scent of lavender and rosemary entwined with leafy greens.

**SIZES (OZ):** 0.25, 5.1, 16.9, 128



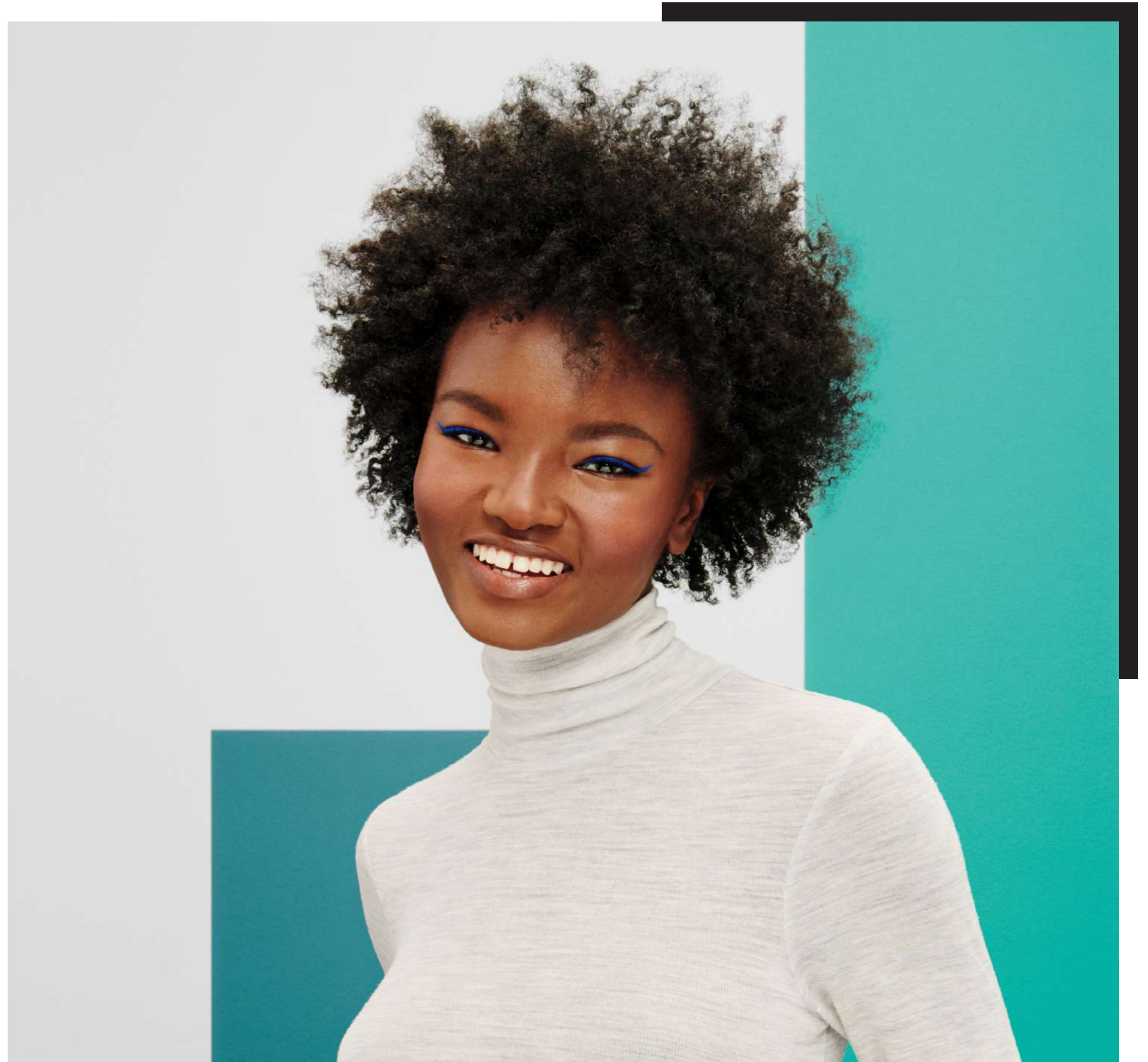
### **AWAPUHI MOISTURE MIST®**

Hydrating Spray • Refreshing

- Versatile spray can be used as a leave-in conditioner to hydrate hair and calm frizz or as a facial mist to refresh skin all day long.
- Contains lactic acid and Hawaiian awapuhi extract for deep moisture and enhanced shine.
- Infused with ingredients rich in amino acids and vitamins to make hair soft, hydrated and silky smooth, while sodium PCA balances moisture.

**FRAGRANCE:** Refreshing cucumber melon scent with soft underlying notes of violet and water flower.

**SIZES (OZ):** 8.5, 16.9



## INVISIBLEWEAR®

Workable. Versatile. Texture.



### INVISIBLEWEAR® SHAMPOO

Preps Texture • Builds Volume

- Creates the foundation for perfectly undone hairstyles.
- Helps cleanse away buildup to volumize, build texture and add shine to dull hair.
- The lightweight formula is infused with velvet flower to soften strands for added manageability.

**FRAGRANCE:** Light, clean fragrance with floral notes and a hint of warm amber.

**SIZES (OZ):** 3.4, 10.14, 33.8



### INVISIBLEWEAR® CONDITIONER

Preps Texture • Builds Volume

- Builds volume and creates the foundation for perfectly undone hairstyles.
- Detangles hair and helps build body while moisturizing and replenishing strands, leaving a glossy shine.
- Lightweight formula is infused with velvet flower to soften strands for added manageability.

**FRAGRANCE:** Light, clean fragrance with floral notes and a hint of warm amber.

**SIZES (OZ):** 10.14, 33.8



### INVISIBLEWEAR® BOOMERANG RESTYLING MIST®

Detangles • Refines

- Lightweight formula allows you to detangle hair and rework flat looks for an easy refresh.
- Moisturizes and revitalizes second-day hair, creating an instant style boost.
- Infused with velvet flower to leave hair soft and help fight frizz.

**FRAGRANCE:** Light, clean fragrance with floral notes and a hint of warm amber.

**SIZE (OZ):** 8.5



### INVISIBLEWEAR® MEMORY SHAPER™

Undone Definition •  
Soft Memory

- Shapes and reshapes hair with gorgeous, undone definition and a soft hold.
- Lightweight formula is infused with velvet flower to leave hair touchably soft for added manageability.
- Perfect for a beautiful blowout or to air dry hair for a natural finish.

**FRAGRANCE:** Light, clean fragrance with floral notes and a hint of warm amber.

**SIZE (OZ):** 8.5



### INVISIBLEWEAR® VELVET CREAM

Lightweight Definition •  
Satin Finish

- Smooths and polishes hair with featherlight definition and a satin finish.
- Use on air-dried or blow-dried hair for an effortless, undone style.
- Non-greasy, velvet flower-infused formula dries down invisibly and softens strands for added manageability.

**FRAGRANCE:** Light, clean fragrance with floral notes and a hint of warm amber.

**SIZE (OZ):** 3.4



### INVISIBLEWEAR® ORBIT HAIRSPRAY

Dry Finish • Natural Hold

- Flip, turn and spray it any way you like for a frizz-fighting natural hold wherever you need it.
- Fine mist boosts volume and tames flyways while holding your style with beautiful brushability.
- Lightweight formula is infused with velvet flower for softness so hair is never stiff or crunchy.

**FRAGRANCE:** Light, clean fragrance with floral notes and a hint of warm amber.

**SIZE (OZ):** 9.5



### INVISIBLEWEAR® UNDONE TEXTURE HAIRSPRAY

Instant Texture • Natural Volume

- Volumizes and gives life to flat, fine hair.
- Lightweight formula adds natural movement with touchable hold for a second-day hair look.
- Infused with velvet flower to soften strands for added manageability.

**FRAGRANCE:** Light, clean fragrance with floral notes and a hint of warm amber.

**SIZE (OZ):** 6.3



### INVISIBLEWEAR® VOLUME WHIP®

Humidity Resistance •  
Natural Hold

- Conditioning mousse adds shine and helps banish frizz with humidity control.
- Lightweight, whipped formula is infused with velvet flower to give hair a long-lasting, crunch-free hold with touchable softness and manageability.
- Perfect for a beautiful blowout or to air dry hair for a natural finish.

**FRAGRANCE:** Light, clean fragrance with floral notes and a hint of warm amber.

**SIZE (OZ):** 6.8



### INVISIBLEWEAR® BRUNETTE DRY SHAMPOO

Extends Blowout •  
Refreshes Hair

- Absorbs oil with undetectable coverage due to its super-fine mist and brown tint.
- The refreshing formula revives a range of dark hair colors in between washes and extends the life of a blowout.
- Leaves hair looking and feeling clean and refreshed.

**FRAGRANCE:** Light, clean fragrance with floral notes and a hint of warm amber.

**SIZE (OZ):** 4.7



### INVISIBLEWEAR™ CLOUD WHIP

Controlled Texture •  
Clean Definition

- Creamy, whipped hair styling cream with a light-as-air feel.
- Layerable, multi-tasking formula is perfect for refreshing second-day hair.
- Infused with velvet flower to condition, control and define hair for soft, touchable texture that dries down invisibly with a clean finish.

**FRAGRANCE:** Light, clean fragrance with floral notes and a hint of warm amber.

**SIZE (OZ):** 4



### INVISIBLEWEAR® PUMP ME UP

Instant Volume • Texture Powder

- Disperses invisibly into roots to boost body, bulk up strands and create instant volume, texture and grip.
- Revitalizes and refreshes flat, limp hair.
- Perfect for creating tousled, lived-in looks.

**FRAGRANCE:** Light, clean fragrance with floral notes and a hint of warm amber.

**SIZE (OZ):** 0.35



*we are*  
**PRODUCT**

## **KIDS**

Gentle. Soothing. Soft.



### **BABY DON'T CRY® SHAMPOO**

Kids Wash • Tear Free

- Gentle cleanser for children of all ages has a neutral pH to prevent eye irritation.
- Infused with a unique blend of extracts that help to hydrate and prevent moisture loss.
- Chamomile and coneflower extracts calm and soothe.

**FRAGRANCE:** A soothing, powdery fragrance with soft floral notes and comforting vanilla.

**SIZES (OZ):** 0.25, 10.14, 16.9, 33.8



### **TAMING SPRAY®**

Kids Detangler • Ouch-Free

- Detangling spray for kids' hair gently removes tangles.
- Reduces flyaway-causing static and helps revive morning hair.
- Leaves hair fresh and full of body.

**FRAGRANCE:** Calming fruity scent with soft accents of rose and amber.

**SIZES (OZ):** 8.5, 16.9

## **ORIGINAL**

Classic. Conditioned. Balanced.



### **SHAMPOO ONE®**

Everyday Wash •  
Balanced Clean

- Daily shampoo thoroughly cleanses all hair types.
- Contains panthenol and wheat-derived conditioners to help improve hair's surface texture and manageability.
- Leaves hair clean and healthy-looking with a fresh tropical scent.

**FRAGRANCE:** Creamy tropical coconut scent with a hint of crushed pineapple.

**SIZES (OZ):** 0.25, 3.4, 10.14, 16.9, 33.8, 128



### **AWAPUHI SHAMPOO™ (ORIGINAL)**

Original Wash •  
Balances Moisture

- Daily shampoo thoroughly cleanses all hair types, including color-treated hair, and brightens hair by removing dulling buildup.
- Hawaiian awapuhi helps prevent moisture loss while special conditioners help improve hair texture and add volume.
- Versatile shampoo multitasks as a luxurious body wash.

**FRAGRANCE:** Refreshing cucumber melon scent with soft underlying notes of violet and water flower.

**SIZES (OZ):** 0.25, 3.4, 10.14, 16.9, 33.8, 128



### **THE CONDITIONER™**

Original Leave-In •  
Balances Moisture

- Original leave-in conditioner infused with Hawaiian awapuhi to help balance moisture, while lightweight conditioners improve hair texture.
- Versatile formula smooths hair, reduces static and prevents dryness.
- Doubles as an excellent moisturizer for the skin.

**FRAGRANCE:** Refreshing herbal scent of lavender and rosemary entwined with leafy greens.

**SIZES (OZ):** 0.25, 3.4, 10.14, 16.9, 33.8, 128



### **THE DETANGLER™**

Original Conditioner •  
Super Rich

- Original conditioner easily detangles and replenishes hair.
- Super rich conditioner is enhanced with grapeseed oil and carrot extract to help provide instant conditioning, detangling and shine.
- Ideal for coarse and color-treated hair.

**FRAGRANCE:** Delicate floral scent of jasmine, rose and violet with subtle notes of sandalwood and fir needle.

**SIZES (OZ):** 0.25, 3.4, 10.14, 16.9, 33.8, 128



## SMOOTHING

Smooth. Silky. Shiny.



### SUPER SKINNY<sup>®</sup> SHAMPOO

Smooths Frizz • Softens Texture

- Daily shampoo cleanses and smooths hair, making strands softer and more manageable.
- Contains mild surfactants that cleanse hair without stripping or plumping.
- Exclusive Super Skinny<sup>®</sup> Complex helps deliver smoother texture with reduced drying time.

**FRAGRANCE:** Lush juicy scent with notes of apple, dewberry, white peach and wild strawberry.

**SIZES (OZ):** 0.25, 10.14, 33.8



### SUPER SKINNY<sup>®</sup> CONDITIONER

Prevents Damage • Softens Texture

- Daily conditioner smooths frizz and softens strands.
- Heat-activated conditioners and thermal protectants help repair hair and prevent surface damage.
- Exclusive Super Skinny<sup>®</sup> Complex helps reduce drying time for faster styling to get you out the door quicker.

**FRAGRANCE:** Lush juicy scent with notes of apple, dewberry, white peach and wild strawberry.

**SIZES (OZ):** 0.25, 10.14, 33.8



### SUPER SKINNY<sup>®</sup> SERUM

Silky Smooth • Humidity Resistant

- This best-selling blowout primer helps speed up drying so you get silky-smooth results faster.
- Humidity-resistant formula contains lightweight silicones that condition and seal the cuticle, leaving hair frizz-free in any weather.
- Apply to clean, damp hair before drying for smooth, shiny strands.

**FRAGRANCE:** Vibrant, juicy scent with notes of apple, berries and sweet florals.

**SIZES (OZ):** 0.85, 5.1, 8.5



### SUPER SKINNY<sup>®</sup> RELAXING BALM™

Smooths Texture • Lightweight

- Lightweight balm smooths wavy, curly or textured hair while locking out frizz.
- Helps protect hair from heat styling while the exclusive Super Skinny<sup>®</sup> Complex helps speed up drying and styling.
- Humidity-resistant styling agents leave hair shiny and manageable.

**FRAGRANCE:** Lush juicy scent with notes of apple, dewberry, white peach and wild strawberry.

**SIZE (OZ):** 6.8



### GLOSS DROPS<sup>®</sup>

Frizz-Free Polish • Brilliant Shine

- The perfect finishing touch for beautiful, glossy hair, this shine serum helps fight frizz and resists humidity.
- Applied to dry hair, it contains lightweight silicones that smooth hair's surface and create brilliant shine, leaving hair soft and silky.
- Highly concentrated serum can be added to your favorite styling products for a boost of shine.

**FRAGRANCE:** Subtle citrus floral scent with notes of lemon, rose and stone fruit.

**SIZES (OZ):** 0.25, 3.4



### STRAIGHT WORKS<sup>®</sup>

Smoothing Styler • Adds Shine

- Straightening gel transforms textured hair and maximizes softness, manageability and shine.
- Lightweight humectants and conditioners leave hair soft and manageable.
- Controls texture and creates a silky-smooth finish, leaving hair soft, sleek and straight.

**FRAGRANCE:** Zesty notes of lemon, grapefruit and mango for a spirited citrus scent.

**SIZE (OZ):** 6.8

## SOFT STYLE

Clean. Touchable. Shine.



### DRY WASH<sup>®</sup>

Refreshes Hair • Dry Shampoo

- Revives hair in between washes and extends the life of your blowout.
- Ideal for all hair types and colors, the ultra-fine, colorless formula leaves no residue and absorbs excess oil.
- Leaves hair looking and feeling freshly washed with a clean scent.

**FRAGRANCE:** Fresh and clean crisp apple scent with a velvety-soft jasmine undertone.

**SIZE (OZ):** 6.6



### FAST FORM<sup>®</sup>

Faster Styling • Tames Texture

- Versatile styler smooths and softens any texture with long-lasting hold; creates great detail and helps reduce drying time.
- Shea butter, evening primrose, avocado and jojoba oils boost shine and manageability.
- Works wonders on curls with defined, frizz-free results; can be applied to wet or dry hair.

**FRAGRANCE:** Soft floral scent with subtle notes of white grapefruit, apple and peach.

**SIZES (OZ):** 0.25, 6.8



### QUICK SLIP™

Faster Styling • Soft Texture

- Lightweight hair styling cream reduces drying time to help get you out the door faster.
- Helps create beautiful, conditioned styles.
- Delivers clean texture and soft, flexible hold.

**FRAGRANCE:** Vibrant peachy scent infused with fresh and airy notes of lily of the valley and water fruits.

**SIZE (OZ):** 6.8



### SOFT SCULPTING SPRAY GEL<sup>®</sup>

Natural Hold • Styling Gel

- Lightweight spray hair gel allows you to easily create natural-looking hairstyles.
- Emollient conditioners and styling agents boost body and provide flexible control.
- Leaves a soft finish with incredible shine and reflection.

**FRAGRANCE:** Breezy, bright scent of honey peach and Valencia orange entwined with refreshing notes of white floral and lily of the valley.

**SIZES (OZ):** 8.5, 16.9, 33.8



### FOAMING POMADE<sup>®</sup>

Anti-Frizz • Styling Pomade

- Liquid pomade enhances wavy and curly hair.
- Smooths, softens and conditions textured hair while fighting frizz.
- Delivers light control with head-turning shine and reflection.

**FRAGRANCE:** Refreshing cucumber melon scent with soft underlying notes of violet and water flower.

**SIZES (OZ):** 5.1, 8.5



### SOFT SPRAY<sup>®</sup>

Natural Hold • Finishing Spray

- Lightweight finishing spray contains flexible styling agents that provide both memory and natural-looking hold.
- Leaves hair soft, touchable and easy to brush through.
- Reactivates with heat or water for easy restyling.

**FRAGRANCE:** Aromatic almond scent.

**SIZES (OZ):** 8.5, 16.9



### SUPER CLEAN LIGHT<sup>®</sup>

Natural Hold • Finishing Spray

- Ideal for fine hair, this hairspray features a light aerosol mist for an even, dry application.
- Delivers clean, touchable results for any finished hairstyle.
- Builds body and provides soft hold for softer, shinier, thicker-looking hair that you can run your fingers through.

**FRAGRANCE:** Refreshing cucumber melon scent with soft underlying notes of violet and water flower.

**SIZE (OZ):** 9.5



### THE CREAM™

Leave-In Conditioner • Styling Cream

- Lightweight leave-in conditioner and hair styling cream helps shield strands from damaging UV rays.
- Provides any hair type with light hold.
- Hawaiian awapuhi extract, emollient conditioners and panthenol build body and maintain moisture.

**FRAGRANCE:** Soft floral scent blended with grapefruit, bergamot and green apple.

**SIZE (OZ):** 6.8

we are  
**PRODUCT**

## **SUPER STRONG®**

Strong. Healthy. Resilient.



### **SUPER STRONG® SHAMPOO**

Strengthens • Rebuilds

- Super Strong® Complex helps rebuild damaged hair from within while conditioning agents improve texture and add shine.
- The mild, color-safe formula gently cleanses and repairs damaged strands, enhancing hair's look and feel.
- Helps protect and prevent further damage.

**FRAGRANCE:** Refreshing watery scent with notes of orange, stone fruit and aquatic cucumber.

**SIZES (OZ):** 0.25, 10.14, 33.8, 128



### **SUPER STRONG® CONDITIONER**

Strengthens • Rebuilds

- Super Strong® Complex helps rebuild the internal structure of damaged hair.
- Canola, soybean and cornstarch add shine and moisture, leaving hair soft and smooth.
- Contains UV protection to help shield strands from damaging UV rays.

**FRAGRANCE:** Refreshing watery scent with notes of orange, stone fruit and aquatic cucumber.

**SIZES (OZ):** 0.25, 10.14, 33.8, 128



### **SUPER STRONG® LIQUID TREATMENT™**

Strengthens • Repairs Damage

- Leave-in hair treatment repairs hair from the inside out and helps seal split ends for smooth, healthy-looking results.
- Super Strong® Complex, marine extracts and vegetable proteins replace lost minerals and replenish every strand.
- Strengthens hair up to 60% with everyday use.

**FRAGRANCE:** Refreshing watery scent with notes of orange, stone fruit and aquatic cucumber.

**SIZE (OZ):** 8.5



## **FIRM STYLE**

Finished. Defined. Hold.



### **SUPER CLEAN SCULPTING GEL®**

Firm Hold • Adds Shine

- Firm-hold hair gel provides maximum control for hard-to-hold styles and delivers high shine and bold texture.
- Firm-holding styling ingredients lock in any look.
- Excellent for creating wet looks.

**FRAGRANCE:** A complex citrus herbal scent with energizing notes of lemon and neroli and additional calming notes of chamomile, peony and rose.

**SIZES (OZ):** 0.25, 3.4, 6.8, 16.9



### **DRY WAX™**

Matte Finish • Moldable Wax

- Moldable hair wax creates clean, lived-in looks with a matte finish.
- Contains emollient waxes and softening agents to create pliable hairstyles.
- Delivers long-lasting hold and a movable finish.

**FRAGRANCE:** Soft floral scent of watery greens and lily of the valley with subtle citrus notes of lemon and pink grapefruit.

**SIZE (OZ):** 1.8



### **FREEZE AND SHINE SUPER SPRAY®**

Maximum Hold • Finishing Spray

- Provides powerful hold and memory.
- Leaves hair with a super shiny, reflective finish.
- Firm-holding styling ingredients lock in any look.

**FRAGRANCE:** Refreshing cucumber melon scent with soft underlying notes of violet and water flower.

**SIZES (OZ):** 3.4, 8.5, 16.9, 33.8, 128



### **SUPER CLEAN EXTRA®**

Maximum Hold • Finishing Spray

- Keeps styles in place with fullness and shine.
- Dries fast for quick and easy styling.
- Provides maximum hold with a clean finish.

**FRAGRANCE:** Refreshing cucumber melon scent with soft underlying notes of violet and water flower.

**SIZE (OZ):** 9.5



### **STAY STRONG®**

Fast Drying • Finishing Spray

- Strong-hold hairspray provides maximum control and volume.
- Fine mist application allows you to layer a little or a lot.
- Weightless, ultra-dry formula provides humidity resistance that helps fight frizz and flyaways, creating the perfect finish in any weather.

**FRAGRANCE:** Fresh and clean crisp apple scent with a velvety-soft jasmine undertone.

**SIZE (OZ):** 9



### **XTG®**

Extreme Thickening Glue

- Quick-drying hair styling glue contains firm styling ingredients that are ideal for creating extreme hairstyles and spiky looks.
- Delivers maximum thickness, bold texture and dries fast for quick and easy styling.
- Great for shorter hair, it locks in any look with a long-lasting hold.

**FRAGRANCE:** Creamy, gourmand vanilla scent.

**SIZE (OZ):** 3.4

## **FLEXIBLE STYLE**

Workable. Versatile. Texture.



### **ESP®**

Elastic Shaping Paste • Versatile

- Versatile, highly concentrated hair paste shapes hair into multiple styles with bendable texture and flexible hold.
- Infused with beeswax for pliability.
- Use to spike, twist, bend and define multiple hairstyles.

**FRAGRANCE:** Energizing citrus scent of tangerine, mandarin, bergamot and orange.

**SIZE (OZ):** 1.8



### **SUPER SCULPT™**

Fast Drying • Styling Glaze

- Fast-drying styling glaze provides flexible control and long-lasting memory.
- Conditioning, bodifying agents and panthenol enhance body and maximize shine.
- Dries fast so you get the results you want in less time.

**FRAGRANCE:** Breezy, delicate blend of florals.

**SIZES (OZ):** 0.25, 8.5, 16.9, 33.8, 128



### **HAIR SCULPTING LOTION™**

Lasting Control • Extreme Shine

- Original liquid styling lotion lets you set hair and forget it, delivering medium hold and long-lasting memory that reactivates with heat or water.
- Styling and bodifying agents, combined with panthenol, add texture and memory while wheat-derived conditioners control static.
- Leaves hair smooth with no flyaways.

**FRAGRANCE:** Clean and fresh scent of lemon and neroli notes followed by soft rose and crunchy greens.

**SIZES (OZ):** 8.5, 16.9



### **RE-WORKS®**

Movable Texture • Styling Cream

- Versatile styling cream lets you change your hair as often as you like with bendable texture and great shine.
- Contains wheat-derived conditioners to create clean, movable texture that's pliable and allows for easy restyling.
- Can be used on wet hair for a natural finish or on dry hair for bold texture.

**FRAGRANCE:** Soft floral scent of watery greens and lily of the valley with subtle citrus notes of lemon and pink grapefruit.

**SIZES (OZ):** 5.1, 6.8



### **FAST DRYING SCULPTING SPRAY™**

Touchable Hold • Working Spray

- Adds body, flexible control and shine to any finished hairstyle.
- Quick-drying hairspray contains flexible styling agents that quickly reactivate with heat or water.
- Provides perfect medium hold with a touchable finish.

**FRAGRANCE:** Refreshing cucumber melon scent with soft underlying notes of violet and water flower.

**SIZES (OZ):** 8.5, 16.9, 33.8



### **SPRAY WAX™**

Pliable Texture • Satin Finish

- Lightweight spray provides soft, three-dimensional flexible texture and volume.
- Features an aerosol mist that delivers bendable texture and frizz control for all hair types and lengths.
- Non-oily wax and sunflower seed oil create a satin finish.

**FRAGRANCE:** Crisp apple scent with subtle notes of pear, cucumber and sandalwood.

**SIZES (OZ):** 2.8, 7.5



### **WAX WORKS™**

High Definition • Bold Texture

- High-definition hair gel creates bold texture and definition and makes hair super shiny.
- Flexible resins and vegetable-based conditioners add definition and texture.
- Strong enough for hair that's hard to control.

**FRAGRANCE:** Tranquil watery scent with hints of clean citrus, water lily and cooling eucalyptus.

**SIZE (OZ):** 6.8



### **SCULPTING FOAM™**

Conditioning Foam • Controls Frizz

- Versatile mousse enhances texture with long-lasting memory that controls frizz and flyaways.
- Conditioning formula contains styling and bodifying agents and panthenol to provide touchable hold and emollients to smooth hair's surface.
- Adds shine and balances moisture.

**FRAGRANCE:** Sweet creamy coconut scent.

**SIZES (OZ):** 2, 6.7, 16.9



### **ROUND TRIP®**

Faster Styling • Defines Curls

- Liquid curl definer provides flexible hold for bouncy, defined waves and curls.
- Contains panthenol and minerals to condition, protect and strengthen wavy and curly hair.
- Reduces drying time to get you on your way faster.

**FRAGRANCE:** Juicy tropical fruit scent with the addition of aromatic black currant.

**SIZES (OZ):** 0.25, 6.8



### **SUPER CLEAN SPRAY®**

Touchable Hold • Finishing Spray

- Fast-drying hairspray adds fullness, texture and shine to hair.
- The lightweight formula offers flexible hold that lets you brush through and style hair the way you want it.
- The fine mist dries fast with clean, touchable results.

**FRAGRANCE:** Refreshing cucumber melon scent with soft underlying notes of violet and water flower.

**SIZES (OZ):** 3.5, 9.5



### **HOLD ME TIGHT™**

Touchable Hold • Finishing Spray

- Quick-drying, flexible hairspray secures any style with a strong, long-lasting hold.
- Conditioners and enhancers impart high shine, minimize static and reduce flyaways.
- Dries fast without stiffness or buildup.

**FRAGRANCE:** Breezy, delicate scent with notes of Cara Cara orange, white grapefruit and lily of the valley.

**SIZE (OZ):** 9.4



### **WORKED UP®**

Quick Drying • Working Spray

- Quick-drying hairspray provides long-lasting, flexible hold.
- Dries in a flash with a crunch-free, no-product feel.
- Vegetable-derived conditioners and enhancers impart high shine and reduce static.

**FRAGRANCE:** Breezy, delicate scent with notes of Cara Cara orange, white grapefruit and lily of the valley.

**SIZE (OZ):** 9.4



### **HOT OFF THE PRESS®**

Thermal Protection Hairspray

- Quick-drying thermal protection hairspray helps protect strands when using curling irons and flat irons.
- Contains rice hull extract that builds a lightweight barrier between hair and heat styling tools, while wheat proteins boost hair's strength.
- Flexible-hold, humidity-resistant, frizz-fighting formula is the perfect finishing touch for any style and any hair type.

**FRAGRANCE:** Breezy, delicate scent with notes of Cara Cara orange, white grapefruit and lily of the valley.

**SIZES (OZ):** 1.7, 6

*we are*  
**PRODUCT**



PAUL MITCHELL **pro**tools

## *Style Smarter,* **NOT HARDER**

- **ADVANCED IONIC TECHNOLOGY**
- **GENTLE ON HAIR**
- **FAST, EFFORTLESS STYLING**
- **SLEEK DIGITAL FEATURES**
- **GREAT RETAIL OPPORTUNITY**

Heat tools are the secret weapon of every good hair day. Paul Mitchell® Pro Tools™ are powerful enough to use in the salon and effortless enough to recreate salon styles at home.

*Learn more*

**INTERESTED IN PURCHASING?**

we are  
**PRODUCT**

## STYLING IRONS

Smooth and Polish Strands  
Quickly and Gently



#1  
BEST  
SELLER



### EXPRESS ION SMOOTH<sup>+</sup>

Superior Smoothing +  
Straightening

**CHOOSE FROM:**

- **1.25"**: Iconic 1.25" plate size is ideal for giving all hair types a completely straight, smooth look.
- **1.5"**: Designed for long, thick or coarse hair, supersized 1.5" plates cover more hair in less time.

**PRO FEATURES:**

- **Fast:** Heats up to 410°F in 60 seconds and cools quickly with a 5-second recovery time.
- **Adjustable:** Large digital display for easy temperature control.
- **Safe:** Ceramic plates heat evenly to help minimize damage.
- **Versatile:** Rounded edges make it easy to add waves, curls or bends.
- **Stress-free:** Automatically shuts off after one hour for peace of mind.
- **Travel-friendly:** Dual voltage for worldwide use.

**EXTRAS INCLUDED:**

- One-year warranty from date of purchase.
- Instructions and safety guide.

\*Based on JPMS™ 2021 tool sales.



### EXPRESS ION STYLE<sup>+</sup>

Straightens + Curls

**PRO FEATURES:**

- **Fast:** Heats up to 410°F in 60 seconds and cools quickly with a 5-second recovery time.
- **Adjustable:** Large digital display for easy temperature control.
- **Safe:** 1" ceramic plates heat evenly to help minimize damage.
- **Versatile:** Rounded shape makes it easy to straighten or curl without kinks.
- **Stress-free:** Automatically shuts off after one hour for peace of mind.
- **Travel-friendly:** Dual voltage for worldwide use.

**EXTRAS INCLUDED:**

- One-year warranty from date of purchase.
- Instructions and safety guide.

## CURLING IRONS

Make Waves and Create Curls  
with a Variety of Barrel Sizes

#1  
BEST  
SELLER



### EXPRESS ION UNCLIPPED 3-IN-1

Interchangeable Barrels for  
Multiple Styling Possibilities

**PRO FEATURES:**

- **Multi-use:** Three tools in one to create a variety of hairstyles: 1" styling rod for loose waves, 1.25" styling cone for natural-looking curls and .75" small styling cone for ringlets.
- **Fast:** Heats up to 410°F in 60 seconds.
- **Adjustable:** Large digital display for easy temperature control.
- **Safe:** Ceramic barrels heat up evenly to help minimize damage.
- **Stress-free:** Automatically shuts off after one hour for peace of mind.
- **Travel-friendly:** Dual voltage for worldwide use.

**EXTRAS INCLUDED:**

- One-year warranty from date of purchase.
- Instructions and safety guide.

\*Based on JPMS™ 2021 tool sales.



### EXPRESS ION CURL<sup>XL</sup>

Creates a Faux Blowout Look

**PRO FEATURES:**

- **Fast:** Heats up to 410°F in 60 seconds and cools quickly with a 5-second heat recovery time.
- **Adjustable:** Large digital display for easy temperature control.
- **Safe:** 1.75" ceramic barrel heats evenly to help minimize damage.
- **Stress-free:** Automatically shuts off after one hour for peace of mind.
- **Travel-friendly:** Dual voltage for worldwide use.

**EXTRAS INCLUDED:**

- One-year warranty from date of purchase.
- Instructions and safety guide.



### EXPRESS ION WAVEPRESS

Instant Ripple Waves and Bends

**PRO FEATURES:**

- **Fast:** Quickly heats up to 430°F.
- **Safe:** Two 1" enclosed ceramic barrels heat evenly to help minimize damage.
- **Versatile:** Five heat settings to style all hair types and textures.
- **Stress-free:** Automatically shuts off after one hour for peace of mind.
- **Travel-friendly:** Dual voltage for worldwide use.

**EXTRAS INCLUDED:**

- One-year warranty from date of purchase.
- Instructions and safety guide.



### TURN UP THE HEAT

Help protect and strengthen strands with Hot Off The Press<sup>®</sup> Thermal Protection Hairspray.

we are  
**PRODUCT**

## DRYERS

Blow-Dry and Style Hair Faster



#1  
BEST  
SELLER

### EXPRESS ION DRY<sup>+</sup> Advanced Styling Dryer

#### PRO FEATURES:

- **Express Ion Complex™:** Far infrared technology for shiny, healthy-looking results.
- **Personalized:** 5 temperature and 5 speed settings to style all hair types.
- **Powerful:** 1875-watt professional motor for fast drying.
- **Precise:** Digital LCD display shows temperature, airflow and cool shot settings.
- **Safe:** Removable filter for optimum cleaning and maintenance.

#### EXTRAS INCLUDED:

- One-year warranty from date of purchase.
- Instructions and safety guide.
- Concentrator nozzle: To concentrate and direct airflow.
- Diffuser attachment: To define curls, add volume and minimize frizz.

\*Based on JPMS™ 2021 tool sales.



## HAIR BRUSHES + COMBS

Straighten, Sculpt and Smooth Strands  
with These Styling Essentials



### 413 SCULPTING BRUSH

Classic Hair Brush

- Easily detangles wet or dry strands.
- Slim paddle design is ideal for sculpting and styling hair.
- Versatile brush for blow-drying and finishing any hairstyle, from a sleek updo to a polished bob.

**AWARDS + FEATURES:** Featured in Harper's Bazaar "Best Brushes for Every Hair Type."



### EXPRESS ION ROUND<sup>+</sup> BRUSH

Sizes S, M, L, XL

- Helps minimize flyaways and creates a frizz-free finish.
- Aluminum barrel heats up while blow-drying to help shape your style.
- Express Ion Complex™ molded into the barrel and corkscrew bristles controls static and helps hair dry faster.

**STYLIST TIP:** Apply hair dryer heat to aluminum barrel to bend hair and create volume.



### 427 PADDLE BRUSH

Provides Maximum Control

- Lightweight design helps build body during a blowout to create lift and volume.
- Wide paddle is able to grab large sections of hair, making it ideal for long or thick hair.
- Creates a professional look in no time.

**STYLIST TIP:** Use for maximum control on long lengths of hair during blow-drying.



### DETANGLER COMB

With Antimicrobial Properties

- Easily detangles wet or dry hair.
- Comfortably glides through strands.
- Helps prevent breakage.

**STYLIST TIP:** Use to evenly distribute hair treatments and hair masks.



### 407 STYLING BRUSH

Creates a Variety of Hairstyles

- Creates smooth waves, dramatic hairstyles and more.
- Versatile smoothing brush with a rounded design and nylon bristles gently grips hair without pulling it.
- Gives hair a smooth, polished look.

**STYLIST TIP:** Use with maximum tension for smooth, sleek blowouts.



### TEASING BRUSH


Creates Volume and Lift

- Creates sky-high hairstyles and voluptuous volume.
- Slim design and three rows of multi-tiered, densely-packed bristles help build body.
- Pointed handle makes it easy to section and part hair.

**STYLIST TIP:** Use to back comb hair to create voluminous styles.

*we are*  
**PRODUCT**



 @teatreehaircare / #TeaTreeHairCare



## *Discover the Magic of* **TEA TREE**

- SIGNATURE TEA TREE TINGLE
- 5 EXPERIENTIAL CATEGORIES FOR A SENSORY EXPERIENCE
- 1 MILLION TREES PLANTED + COMMITTED TO PLANTING A MILLION MORE BY 2030
- INFUSED WITH PAMPERING BOTANICALS

Tea Tree indulges salon guests from head to toe and transforms an ordinary service into a feast for the senses. Tea Tree offers an experience like no other, creating the wow factor at the backbar and leaving guests wanting more.

### **TEA TREE SPECIAL**

Invigorate, refresh and renew any hair type

### **TEA TREE SPECIAL COLOR**

Invigorate and preserve color-treated hair

### **TEA TREE SPECIAL DETOX**

Clarify and soothe the scalp

### **TEA TREE LAVENDER MINT**

Calm and quench dry hair

### **TEA TREE SCALP CARE**

Strengthen thinning hair

### **TEA TREE LEMON SAGE**

Thicken and energize fine hair

### **TEA TREE HEMP**

Restore hair and skin

[Learn more](#)

[INTERESTED IN PURCHASING?](#)

we are  
**PRODUCT**

## TEA TREE SPECIAL

Tingle. Invigorate. Renew.



#1  
BEST  
SELLER

### TEA TREE SPECIAL SHAMPOO\*

Invigorating Shampoo

- Special ingredients and tea tree oil help wash away impurities, leaving hair full of vitality and luster.
- Refreshing tingle invigorates the scalp.
- Tea tree oil, peppermint and lavender leave hair smelling great.

**FRAGRANCE:** The reviving scent of tea tree provides an invigorating aromatherapy experience like no other.

**SIZES (OZ):** 0.25, 2.5, 10.14, 16.9, 33.8, 128

\*Based on JPMS™ 2021 sales.



### TEA TREE SPECIAL CONDITIONER\*

Invigorating Conditioner

- Moisturizing botanical blend helps to soften, smooth and tackle tangles.
- Refreshing tingle invigorates the scalp.
- Tea tree oil, peppermint and lavender leave hair smelling great.

**FRAGRANCE:** The reviving scent of tea tree provides an invigorating aromatherapy experience like no other.

**SIZES (OZ):** 0.25, 2.5, 10.14, 16.9, 33.8



### TEA TREE HAIR AND SCALP TREATMENT\*

Invigorating • Soothing

- Hydrating mask conditions and repairs hair while moisturizing and soothing the scalp.
- Soy protein, panthenol and shea butter hydrate and soothe.
- Stimulating blend of tea tree oil, peppermint and lavender leaves hair smelling great.

**FRAGRANCE:** The reviving scent of tea tree provides an invigorating aromatherapy experience like no other.

**SIZES (OZ):** 6.8, 16.9



### TEA TREE HAIR AND BODY MOISTURIZER\*

Leave-In Conditioner

- Multitasking moisturizer can be used as a leave-in conditioner, body lotion and after-shave cream.
- Soothes, cools, rejuvenates and moisturizes skin, and hydrates dry hair.
- Tea tree oil, peppermint and lavender leave hair smelling great.

**FRAGRANCE:** The reviving scent of tea tree provides an invigorating aromatherapy experience like no other.

**SIZES (OZ):** 2.5, 10.14, 33.8, 125



### TEA TREE STYLING GEL\*

Body • Shine

- Refreshing hair gel creates body and intense shine with medium hold.
- Lavender, tea tree oil and peppermint invigorate the senses and leave hair smelling great.
- Versatile formula can be applied to wet or dry hair.

**FRAGRANCE:** The reviving scent of tea tree provides an invigorating aromatherapy experience like no other.

**SIZES (OZ):** 2.5, 6.8



### TEA TREE FIRM HOLD GEL\*

Maximum Hold • Shine

- Firm hold, flake-free gel helps thicken and build body with a healthy dose of shine.
- Styling ingredients help your style stay put.
- Invigorating fragrance refreshes and revives.

**FRAGRANCE:** A burst of cool mint, tea tree and citrus refreshes and revives the senses.

**SIZES (OZ):** 2.5, 6.8



### TEA TREE GROOMING POMADE\*

Flexible Hold • Shine

- Shapes hair and defines waves or curls with tons of shine and flexible hold.
- Flexible resins and vegetable-based conditioners soften and hold.
- Tea tree and a burst of cool mint and citrus leave hair smelling great.

**FRAGRANCE:** The reviving scent of tea tree provides an invigorating aromatherapy experience like no other.

**SIZE (OZ):** 3



### TEA TREE STYLING WAX\*

Definition • Control

- Creates flexible hold and texture that won't quit, making hair shiny and defined with loads of control.
- Flexible styling ingredients and vegetable-based conditioners define and add shine.
- Lavender, tea tree oil and peppermint leave hair smelling great.

**FRAGRANCE:** The reviving scent of tea tree provides an invigorating aromatherapy experience like no other.

**SIZE (OZ):** 6.8



### TEA TREE HAND SOAP™

Refreshing Deep Cleanser

- Washes away dirt and grime.
- Refreshes with a botanical blend featuring tea tree oil.
- Invigorates the senses with the reviving scent of lavender, tea tree and peppermint.

**FRAGRANCE:** The reviving scent of tea tree provides an invigorating aromatherapy experience like no other.

**SIZES (OZ):** 10.14, 33.8



### TEA TREE BODY BAR\*

Cleansing • Shaving

- Rich-lathering bar soap cleans, exfoliates and helps all skin types feel fresh.
- Parsley flakes gently exfoliate.
- Enriched with invigorating tea tree oil.

**FRAGRANCE:** The invigorating aroma of mint, eucalyptus, lavender and rosemary provides a fresh, clean feel.

**SIZES (OZ):** 1.25, 5.3



### TEA TREE SPECIAL COLOR SHAMPOO

Invigorating Anti-Fade Cleanser

- Color-protecting formula gently washes away everyday impurities, leaving hair clean and full of vibrant luster.
- Rooibos tea botanicals help protect hair color from the elements and fading.
- Tea tree oil and peppermint soothe the scalp and leave hair smelling fresh.

**FRAGRANCE:** Infused with a refreshing blend of airy bergamot, mint leaf and orange blossom that invigorates the senses.

**SIZES (OZ):** 0.25, 2.5, 10.14, 33.8



### TEA TREE SPECIAL COLOR CONDITIONER

Invigorating Anti-Fade Conditioner

- Color-protecting formula, gentle enough for daily use, tackles tangles, leaving the hair and scalp looking and feeling healthy.
- Rooibos tea botanicals help protect hair color from the elements and fading.
- Tea tree oil and peppermint soothe the scalp and leave hair smelling fresh.

**FRAGRANCE:** Infused with a refreshing blend of airy bergamot, mint leaf and orange blossom that invigorates the senses.

**SIZES (OZ):** 0.25, 2.5, 10.14, 33.8



### TEA TREE SHAVE GEL\*

Refreshing Foaming Gel

- Sleek gel transforms into a rich foam for a clean, close shave.
- Special skin conditioners help soothe and protect against razor burn.
- Tea tree oil, peppermint and lavender cool skin, leaving it feeling refreshed and renewed.

**FRAGRANCE:** The reviving scent of tea tree provides an invigorating aromatherapy experience like no other.

**SIZE (OZ):** 7



### TEA TREE AROMATIC OIL

Essential Oil

- Essential oil invigorates the senses.
- Contains refreshing and stimulating tea tree oil.
- Use it during a massage, add it to a bath or manicure/pedicure for its aromatherapy benefits and unique sensorial experience.

**FRAGRANCE:** The reviving scent of tea tree provides an invigorating aromatherapy experience like no other.

**SIZES (OZ):** 0.33, 1.7



### TEA TREE SHAPING CREAM™

Strong, Flexible Texture

- Shapes hair and adds definition, long-lasting hold and a matte finish.
- Cream contains mesh-like fibers that define and separate.
- A burst of cool mint, tea tree and citrus leaves hair smelling great.

**FRAGRANCE:** A burst of cool mint, tea tree and citrus refreshes and revives the senses.

**SIZES (OZ):** 0.35, 3

\*Based on JPMS™ 2021 sales.

*we are*  
**PRODUCT**

## TEA TREE SPECIAL

Tingle. Invigorate. Renew.



### TEA TREE SPECIAL DETOX FOAMING SALT SCRUB

Exfoliates and Refreshes Scalp

- Himalayan pink salt, volcanic ash and French green clay exfoliate away dead skin flakes.
- Removes product buildup, excess oil and sebum while polishing and soothing the scalp.
- Leaves the scalp feeling smooth, refreshed and renewed.

**FRAGRANCE:** The reviving scent of tea tree provides an invigorating aromatherapy experience like no other.

**SIZE (OZ):** 6.5



### TEA TREE SPECIAL DETOX KOMBUCHA RINSE

Removes Buildup • Adds Shine

- Clarifying rinse infused with kombucha and apple cider vinegar removes product buildup, excess oil and sebum from scalp.
- Smooths and seals the hair cuticle for a super-polished, shiny look.
- Boosts softness and shine, and leaves hair smelling great.

**FRAGRANCE:** The reviving scent of tea tree provides an invigorating aromatherapy experience like no other.

**SIZE (OZ):** 6.8



## TEA TREE HEMP

Balance. Nourish. Restore.



### TEA TREE HEMP RESTORING SHAMPOO & BODY WASH

2-in-1 Cleanser

- Creamy hemp-based lather gently cleanses hair and skin.
- Hydrating hemp extracts soothe and moisturize from head to toe.
- Subtle, refreshing tingle and balancing, nature-immersive fragrance indulges the senses.

**FRAGRANCE:** Bergamot, eucalyptus, evergreen and cedarwood create a mind-balancing aromatherapy experience.

**SIZES (OZ):** 10.14, 33.8



### TEA TREE HEMP RESTORING CONDITIONER & BODY LOTION

2-in-1 Hydration

- Multitasking conditioner helps restore hair and skin in one simple step.
- Nourishing hemp seed oil and hemp extracts hydrate from head to toe.
- Balancing, nature-immersive fragrance indulges the senses.

**FRAGRANCE:** Bergamot, eucalyptus, evergreen and cedarwood create a mind-balancing aromatherapy experience.

**SIZES (OZ):** 10.14, 33.8



### TEA TREE HEMP MULTITASKING SPRAY

All-in-One Style Prep

- Do-it-all spray hydrates and detangles while adding soft style memory.
- Hemp seed oil and hemp extracts nourish strands, manage frizz and add shine.
- Balancing, nature-immersive fragrance indulges the senses.

**FRAGRANCE:** Bergamot, eucalyptus, evergreen and cedarwood create a mind-balancing aromatherapy experience.

**SIZE (OZ):** 6.8



### TEA TREE HEMP REPLENISHING HAIR & BODY OIL

2-in-1 Moisture Balance

- Gives hair and skin a replenishing boost of hydration.
- Nutrient-rich hemp seed oil soothes, softens and adds shine.
- Balancing, nature-immersive fragrance indulges the senses.

**FRAGRANCE:** Bergamot, eucalyptus, evergreen and cedarwood create a mind-balancing aromatherapy experience.

**SIZE (OZ):** 1.7

*we are*  
**PRODUCT**

## LAVENDER MINT

Calm. Cool. Quench.



### LAVENDER MINT MOISTURIZING SHAMPOO™

Hydrating • Soothing

- Cleanses, soothes and replenishes dry hair.
- Moisture-rich conditioners and amino acids improve strength, shine and manageability.
- The dreamy scent of calming lavender, mint and tea tree soothes the mind and spirit.

**FRAGRANCE:** Infused with calming lavender and mint, the spa-like scent relaxes the mind and spirit for a soothing aromatherapy experience.

**SIZES (OZ):** 0.25, 2.5, 10.14, 33.8, 128



### LAVENDER MINT MOISTURIZING COWASH

Conditioning No-Lather Cleanse

- Gently cleanses, hydrates and nourishes coarse hair and natural curls, leaving hair soft and manageable.
- Monoi, pequi and jojoba oils help detangle, fight frizz and add shine while locking in natural oils.
- Calming lavender and mint put mind and hair at ease.

**FRAGRANCE:** Infused with calming lavender and mint, the spa-like scent relaxes the mind and spirit for a soothing aromatherapy experience.

**SIZES (OZ):** 0.5, 2.5, 16.9, 33.8



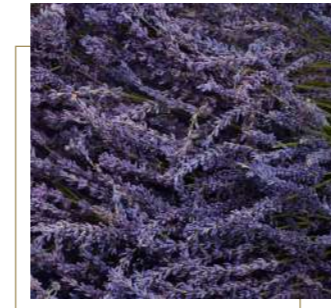
### LAVENDER MINT MOISTURIZING CONDITIONER™

Hydrating • Soothing

- Hydrates, detangles, softens and quenches dry hair.
- Contains ultra-rich conditioners that detangle and hydrate strands while helping to improve manageability and thwart split ends.
- The dreamy scent of calming lavender, mint and tea tree soothes the mind and spirit.

**FRAGRANCE:** Infused with calming lavender and mint, the spa-like scent relaxes the mind and spirit for a soothing aromatherapy experience.

**SIZES (OZ):** 0.25, 2.5, 10.14, 33.8



### LAVENDER MINT CONDITIONING LEAVE-IN SPRAY

Softening • Smoothing

- Lightweight leave-in conditioner replenishes and conditions strands.
- Vitamin E and panthenol lock in moisture for hair that's soft and manageable with a glossy-smooth finish.
- Calming lavender, mint and tea tree soothe the senses.

**FRAGRANCE:** Infused with calming lavender and mint, the spa-like scent relaxes the mind and spirit for a soothing aromatherapy experience.

**SIZE (OZ):** 6.8



### LAVENDER MINT OVERNIGHT MOISTURE THERAPY

Restores Hair • Enhances  
Sleep Quality

- Restores and repairs as you sleep for healthy, hydrated hair.
- Monoi, pequi and jojoba oils help repair, protect and deeply condition dry, damaged hair.
- Softening, rich, pillow-safe formula is designed to provide a higher-quality night's sleep with soothing aromatherapy.

**FRAGRANCE:** A sleep-enhancing blend of dreamy herbs and florals calms the mind and soothes the soul for a more tranquil state.

**SIZES (OZ):** 0.25, 3.4



### LAVENDER MINT NOURISHING OIL

Moisturizing • Smoothing

- Layerable, fast-absorbing, multi-benefit treatment oil nourishes coarse, curly or textured hair.
- Pequi and jojoba oils help soften and smooth hair, while helping to fight frizz and humidity, and seal split ends.
- Calming lavender and mint put mind and hair at ease.

**FRAGRANCE:** Infused with calming lavender and mint, the spa-like scent relaxes the mind and spirit for a soothing aromatherapy experience.

**SIZE (OZ):** 1.7



### LAVENDER MINT DEEP CONDITIONING MINERAL HAIR MASK

Hydrating • Strengthening

- Creamy, ultra-rich hair mask helps strengthen and hydrate strands.
- Contains natural French clay with nourishing, restorative minerals.
- Calms the senses with the comforting fragrance of lavender, mint and tea tree oil.

**FRAGRANCE:** Infused with calming lavender and mint, the spa-like scent relaxes the mind and spirit for a soothing aromatherapy experience.

**SIZES (OZ):** 0.68 UNI-DOSE PACKS (SET OF 6)



### LAVENDER MINT DEFINING GEL

Lightweight Frizz Control

- Provides deep hydration to enhance texture, lock out humidity and define curls without leaving them stiff, crunchy or weighed down.
- Monoi, pequi and jojoba oils help fight frizz, add shine and define texture.
- Infused with calming lavender, mint and tea tree.

**FRAGRANCE:** Infused with calming lavender and mint, the spa-like scent relaxes the mind and spirit for a soothing aromatherapy experience.

**SIZE (OZ):** 6.8



### LAVENDER MINT TAMING CREAM

Hydrating • Controlling

- Shapes and nourishes curly and wavy hair for enhanced natural styles or a smooth blowout.
- Monoi, pequi and jojoba oils help to fight frizz, tame curls and waves, and deeply hydrate and nourish the hair without weighing it down.
- Calming lavender and mint put mind and hair at ease.

**FRAGRANCE:** Infused with calming lavender and mint, the spa-like scent relaxes the mind and spirit for a soothing aromatherapy experience.

**SIZES (OZ):** 1.7, 3.4



### LAVENDER MINT MOISTURE MILK

Nourishing Daily Frizz Control

- Milky leave-in conditioner gives wavy, curly and coily hair the daily hydration and frizz control it needs.
- Non-greasy formula contains monoi, pequi and jojoba oils, adding layerable moisture, manageability, shine, control and definition.
- Calming lavender and mint put mind and hair at ease.

**FRAGRANCE:** Infused with calming lavender and mint, the spa-like scent relaxes the mind and spirit for a soothing aromatherapy experience.

**SIZES (OZ):** 3.4



### LAVENDER MINT CURL REFRESH FOAM

Revives and Enhances Texture

- Brings curls and natural waves back to life between washes, restoring volume and bounce.
- Monoi, pequi and jojoba oils help add moisture and nourishment, detangle hair and define curls.
- Calming lavender and mint put mind and hair at ease.

**FRAGRANCE:** Infused with calming lavender and mint, the spa-like scent relaxes the mind and spirit for a soothing aromatherapy experience.

**SIZE (OZ):** 6.8



we are  
**PRODUCT**

## LEMON SAGE

Awaken. Refresh. Energize.



### LEMON SAGE THICKENING SHAMPOO\*

Energizing Body Builder

- Cleanses and boosts volume, while panthenol strengthens every strand.
- Leaves hair clean, thick and healthy.
- Uplifting lemon, soothing sage, tingly peppermint and tea tree oil invigorate and renew mind, spirit and hair.

**FRAGRANCE:** Infused with an uplifting blend of zesty bergamot, lemon and white sage that awakens the senses and energizes the soul.

**SIZES (OZ):** 0.25, 2.5, 10.14, 33.8, 128



### LEMON SAGE THICKENING CONDITIONER\*

Energizing Body Builder

- Gives hair a thickening boost of volume.
- Lightweight conditioners protect hair, detangle and add shine.
- Uplifting lemon, soothing sage, tingly peppermint and tea tree oil energize mind, spirit and hair.

**FRAGRANCE:** Infused with an uplifting blend of zesty bergamot, lemon and white sage that awakens the senses and energizes the soul.

**SIZES (OZ):** 0.25, 10.14, 33.8



### LEMON SAGE THICKENING SPRAY\*

Lightweight Style Booster

- Plumps up strands with a cocktail of lightweight thickening ingredients.
- Flexible, high-performance styling agents grip fine hair for added control.
- Delivers a light, clean hold and a fresh, no-product feel.

**FRAGRANCE:** Infused with an uplifting blend of zesty bergamot, lemon and white sage that awakens the senses and energizes the soul.

**SIZES (OZ):** 2.5, 6.8



## SCALP CARE

Stimulate. Strengthen. Regenerate.



### SCALP CARE ANTI-THINNING SHAMPOO

For Fuller, Stronger Hair

- Gently cleanses the scalp for fuller, thicker-looking hair.
- Color-safe formula features the exclusive Regeniplex® blend of Kakadu plum, pea peptides, clover flower, turmeric and ginseng to revitalize the scalp.
- 85% reported increased hair volume and strength when used as part of the Scalp Care product regimen.\*

**FRAGRANCE:** Inspired by nature and the botanical ingredients found in the Tea Tree Scalp Care products—bright lemon, basil and fir top notes mixed with florals, fresh herbs and rich base notes of patchouli, vanilla and amber.

**SIZES (OZ):** 3.4, 10.14, 33.8



### ANTI-THINNING CONDITIONER

For Fuller, Stronger Hair

- Detangles and strengthens fine, fragile hair without weighing it down.
- Exclusive Regeniplex® blend of Kakadu plum, pea peptides, clover flower, turmeric and ginseng helps prevent breakage and adds volume, resulting in fuller, thicker-looking hair.
- 85% reported increased hair volume and strength when used as part of the Scalp Care product regimen.\*

**FRAGRANCE:** Inspired by nature and the botanical ingredients found in the Tea Tree Scalp Care products—bright lemon, basil and fir top notes mixed with florals, fresh herbs and rich base notes of patchouli, vanilla and amber.

**SIZES (OZ):** 3.4, 10.14, 33.8



### ANTI-THINNING TONIC

Leave-On Scalp Treatment

- Dissolves oily buildup on the scalp to help encourage an ideal scalp environment.
- Exclusive Regeniplex® blend of Kakadu plum, pea peptides, clover flower, turmeric and ginseng revitalizes the scalp.
- 85% reported increased hair volume and strength when used as part of the Scalp Care product regimen.\*

**FRAGRANCE:** Inspired by nature and the botanical ingredients found in the Tea Tree Scalp Care products—bright lemon, basil and fir top notes mixed with florals, fresh herbs and rich base notes of patchouli, vanilla and amber.

**SIZES (OZ):** 1.7, 3.4



### ANTI-THINNING ROOT LIFT FOAM

For Volume and Texture

- Liquid-to-foam volumizing mousse lifts hair from the root for a healthy boost of texture.
- Helps bulk up strands with panthenol and cornstarch.
- Exclusive Regeniplex® blend of Kakadu plum, pea peptides, clover flower, turmeric and ginseng creates thicker, fuller-looking hair.

**FRAGRANCE:** Inspired by nature and the botanical ingredients found in the Tea Tree Scalp Care products—bright lemon, basil and fir top notes mixed with florals, fresh herbs and rich base notes of patchouli, vanilla and amber.

**SIZES (OZ):** 6.8



\*When used as part of the Scalp Care product regimen. Based on an 8-week clinical study on 28 people conducted in an independent laboratory. Results may vary.

*we are*  
**PRODUCT**



***Born in Hawaii,  
MADE FOR  
LUXURY***

- AWAPUHI SOURCED FROM OUR ORGANIC, SOLAR-POWERED FARM
- RICH, LUXURIOUS SHAMPOOS & CONDITIONERS
- MODERN, HIGH-PERFORMANCE STYLING PRODUCTS
- TWO PROFESSIONAL TREATMENTS WITH PROVEN RESULTS
- EXCLUSIVE KERAREFLECT® AND KERATRIPLEX® TECHNOLOGIES

For centuries, Hawaiians have used the fragrant juice of the awapuhi ginger plant to moisturize skin and hair. Today, tradition meets technology with a proven hair care system that uses awapuhi wild ginger and innovative proprietary complexes to transform hair at the deepest levels.

**REPAIR**  
Rebuild dry,  
damaged hair

**SMOOTH**  
Transform frizzy,  
lackluster hair

**STYLE**  
Protect hair while  
locking in style

[Learn more](#)

[INTERESTED IN PURCHASING?](#)

@paulmitchell / #AwapuhiWildGinger



**AWAPUHI WILD  
GINGER®**

**PROFESSIONAL TREATMENTS**



**HYDRATRIPLEX™  
TREATMENT**

Professional Use Only

**82% Softer, More Manageable Hair\***

- Revives dry, frizzy hair with a rich, concentrated blend of amino acids, vegetable proteins and nourishing oils.
- Works on three levels to instantly nourish and soften dry strands, as well as improve hair manageability.
- Cream formula penetrates the hair to hydrate, bind and seal the cuticle for a long-lasting silky-smooth feel.

\*Compared to untreated hair. Product was tested by an established, independent third-party laboratory.



**KERATRIPLEX™  
TREATMENT**

Professional Use Only

**80% Reduced Breakage\***

- 2-Step Repair transforms broken, brittle strands into pillars of strength while protecting hair from future damage.
- **Step 1:** KeraTriplex® formula of isolated proteins that are virtually identical to the keratin found in human hair rebuilds fragile strands, helps prevent color fade and improves shine.
- **Step 2:** Keratin Intensive Treatment® restores hair's super-soft texture.

\*Compared to untreated hair, results may vary.

**REPAIR**



**MOISTURIZING  
LATHER SHAMPOO\***

Ultra Rich • Color Safe

- Gently cleanses and repairs dry, damaged hair while protecting hair color.
- KeraTriplex®, an exclusive keratin protein blend, replenishes every strand for healthy-looking hair.
- Natural awapuhi extract balances moisture for manageability and shine.

**FRAGRANCE:** Ginger tea scent with fresh notes of Italian bergamot and Sicilian lemon create a bright, energetic top note over the exotic complexity of ginger and beautiful florals. With additional notes of green tea, lily, jasmine, musk, wood and spice.

**SIZES (OZ):** 3.4, 8.5, 33.8



**KERATIN CREAM  
RINSE\***

Detangle • Revive

- Daily, color-safe conditioner strengthens and protects hair, instantly detangles and replenishes dry strands.
- Instantly softens and conditions hair with the moisturizing power of awapuhi.
- KeraTriplex®, an exclusive blend of keratin protein, helps repair every strand and protects against damage.

**FRAGRANCE:** Ginger tea scent with fresh notes of Italian bergamot and Sicilian lemon create a bright, energetic top note over the exotic complexity of ginger and beautiful florals. With additional notes of green tea, lily, jasmine, musk, wood and spice.

**SIZES (OZ):** 3.4, 8.5, 33.8



**KERATIN INTENSIVE  
TREATMENT\***

Enrich • Repair

- Weekly deep conditioning mask instantly improves hair texture with noticeable results.
- KeraTriplex®, an exclusive keratin protein blend, rebuilds and repairs lackluster hair.
- Awapuhi extract replenishes every strand with intense hydration and shine.

**FRAGRANCE:** Ginger tea scent with fresh notes of Italian bergamot and Sicilian lemon create a bright, energetic top note over the exotic complexity of ginger and beautiful florals. With additional notes of green tea, lily, jasmine, musk, wood and spice.

**SIZES (OZ):** 3.4, 5.1, 16.9

**SMOOTH**



**MIRRORSMOOTH™  
SHAMPOO**

Frizz Control • Moisture Balance

- Rich foaming shampoo restores the hair's optimal moisture balance and leaves strands silky-smooth.
- KeraReflect®, an exclusive blend with natural Abyssinian oil, awapuhi extract and keratin protein, replenishes moisture, smooths the cuticle and boosts shine.
- Transforms frizzy, lackluster hair into soft, shiny strands with a mirror-smooth finish.

**FRAGRANCE:** Hibiscus flower scent with a layering of bergamot zest, fresh pineapple, wild ginger, hibiscus flower, frangipani petals and coconut water.

**SIZES (OZ):** 8.5, 33.8



**MIRRORSMOOTH™  
CONDITIONER**

Eliminates Frizz • Superior Softness

- Color-safe conditioner abolishes frizz and leaves hair luxuriously soft with a shiny, reflective finish.
- KeraReflect®, an exclusive blend infused with natural Abyssinian oil, awapuhi extract and keratin protein, smooths and softens every strand.
- Helps prevent flyaways and protects strands from thermal damage.

**FRAGRANCE:** Hibiscus flower scent with a layering of bergamot zest, fresh pineapple, wild ginger, hibiscus flower, frangipani petals and coconut water.

**SIZE (OZ):** 33.8

**STYLE**



**NO BLOWOUT  
HYDROCREAM**

Lightweight • Air-Dry Enhancer  
**Air Dries Hair Twice As Fast\***

- Lightweight styling cream adds polish and body to all hair types without blow-drying.
- Speeds up air-drying and enhances natural texture.
- KeraTriplex™ technology and awapuhi extract help balance moisture and eliminate frizz for a soft, healthy-looking finish.

\*From wet to completely dry, as compared to untreated hair. Results may vary.

**FRAGRANCE:** Tropical ginger green tea mango scent with notes of Italian bergamot, Sicilian lemon, green tea, lily, ginger, jasmine, musk, wood and spice.

**SIZES (OZ):** 1.7, 5.1



**HYDROCREAM WHIP\***

Frizz Control • Touchable Hold

- Styling mousse hydrates and smooths dry hair.
- Delivers long-lasting, crunch-free hold with a silky, soft finish.
- Light conditioners and natural awapuhi extract fight frizz and balance moisture for healthy-looking hair.

**FRAGRANCE:** Tropical ginger green tea mango scent with notes of Italian bergamot, Sicilian lemon, green tea, lily, ginger, jasmine, musk, wood and spice.

**SIZE (OZ):** 6.7



**HYDROMIST  
BLOW-OUT SPRAY\***

Style Amplifier • Weightless Hold

- Volumizing spray preps hair for a flawless blowout with weightless, long-lasting hold.
- High-performance volumizers make hair look and feel healthier.
- Natural awapuhi and honey extracts help balance moisture and eliminate frizz, while lightweight conditioners help protect against damage from blow-drying.

**FRAGRANCE:** Tropical ginger green tea mango scent with notes of Italian bergamot, Sicilian lemon, green tea, lily, ginger, jasmine, musk, wood and spice.

**SIZE (OZ):** 5.1



**STYLING  
TREATMENT OIL\***

Ultra-Light • Silky

- Dry-touch oil absorbs easily into the hair to deliver a soft, silky texture and rich shine.
- Awapuhi extract and lightweight silicones seal strands, smooth hair and add shine.
- Ultra-lightweight formula ensures a natural-looking finish.

**FRAGRANCE:** Tropical ginger green tea mango scent with notes of Italian bergamot, Sicilian lemon, green tea, lily, ginger, jasmine, musk, wood and spice.

**SIZES (OZ):** 0.85, 3.4, 5.1



**TEXTURIZING  
SEA SPRAY\***

Beach Waves • Body

- Surf-inspired hairspray adds lush body, volume and texture to straight or wavy hair.
- Enhances and defines beach waves with touchable movement.
- Awapuhi extract balances moisture for a healthy-looking finish.

**FRAGRANCE:** Tropical ginger green tea mango scent with notes of Italian bergamot, Sicilian lemon, green tea, lily, ginger, jasmine, musk, wood and spice.

**SIZE (OZ):** 5.1



**SHINE SPRAY™**

Condition • Illuminate

- Clean, light mist adds brilliance to any style with a natural finish.
- Awapuhi extract balances moisture and intensifies shine.
- Helps protect hair during heat styling.

**FRAGRANCE:** Tropical ginger green tea mango scent with notes of Italian bergamot, Sicilian lemon, green tea, lily, ginger, jasmine, musk, wood and spice.

**SIZE (OZ):** 3.3



**FINISHING SPRAY™**

Firm Hold • Natural Finish

- Fast-drying spray provides humidity resistance and shine.
- Awapuhi extract balances moisture and leaves hair feeling soft and healthy.
- Locks in style with a touchable, natural finish and firm hold.

**FRAGRANCE:** Tropical ginger green tea mango scent with notes of Italian bergamot, Sicilian lemon, green tea, lily, ginger, jasmine, musk, wood and spice.

**SIZE (OZ):** 9.1



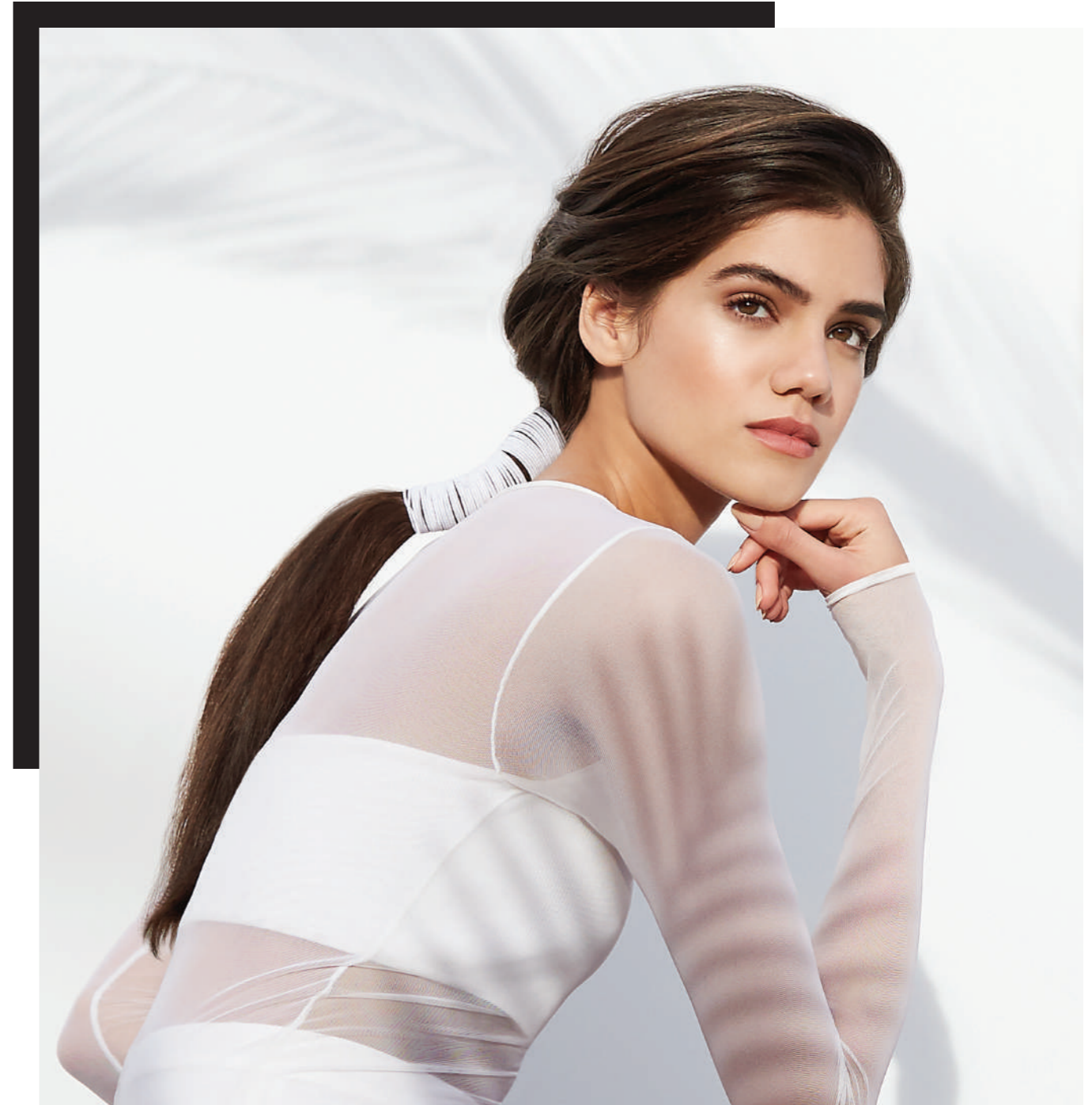
**ANTI-FRIZZ  
HAIRSPRAY**

Humidity Shield • Medium Hold

- Fast-drying hairspray disperses softly and evenly, forming a humidity-resistant netting that protects hair against frizz.
- Infused with natural awapuhi extract and KeraTriplex™ technology to help balance moisture.
- Leaves hair soft and healthy-looking with a medium hold.

**FRAGRANCE:** Tropical ginger green tea mango scent with notes of Italian bergamot, Sicilian lemon, green tea, lily, ginger, jasmine, musk, wood and spice.

**SIZE (OZ):** 9.1



*we are*  
**PRODUCT**



@paulmitchell / #MitchTheMan



## *Style* **SIMPLIFIED**

- PREMIUM MEN'S GROOMING LINE
- MULTI-BENEFIT PRODUCTS
- WORKABLE, LONG-LASTING STYLES
- AWARD-WINNING BRAND
- UNMATCHED EDUCATION AND SUPPORT

With products ranging from moderate to maximum hold and ultra-matte to high shine, MITCH® tailors to every guy's personal style. The complete collection features high-performing ingredients and clean scents to make great grooming easy.

[Learn more](#)

[INTERESTED IN PURCHASING?](#)

**MITCH**

**CARE**



**DOUBLE HITTE®**

Wash • Condition

- Washes and conditions in one easy step.
- Creates a hearty lather and leaves hair full and healthy-looking with a fresh scent.
- Conditioning ingredients provide improved detangling with a soft, light finish.

**FRAGRANCE:** Infused with the refreshing scent of citrus and mint.

**SIZES (OZ):** 8.5, 33.8



**HEAVY HITTE®**

Invigorates • Deep Cleans

- Washes away dirt and product buildup for a powerful clean feeling.
- Won't strip the scalp of natural oils.
- Invigorates the senses with an energizing citrus and agave scent.

**FRAGRANCE:** Infused with the energizing scent of citrus and agave.

**SIZES (OZ):** 8.5, 33.8

**GROOMING**



**CONSTRUCTION PASTE®**

Medium Hold • Low Shine

- Flexible styling paste forms, separates and defines any hair type with a low-shine, crunch-free finish and no flaking.
- Long-lasting styling fixatives secure the style, while conditioning ingredients leave hair soft and manageable.
- Elastic hold is great for forming messy, undone styles.

**FRAGRANCE:** Infused with the invigorating scent of pine and fresh lavender.

**SIZE (OZ):** 2.5



**STEADY GRIP®**

Medium Hold • Medium Shine

- Medium hold hair gel helps hair look thicker as it shapes and separates any style.
- Alcohol-free formula resists flaking and drying.
- Provides a clean finish with medium shine.

**FRAGRANCE:** Infused with the invigorating scent of pine and fresh lavender.

**SIZE (OZ):** 5.1



**CALIBRATE**

Medium Hold • Low Shine

- Adds volume and thickness to any hair type or texture.
- Creates fuller, long-lasting styles without the weight.
- Ideal for bulking up fine or thinning hair.

**FRAGRANCE:** Infused with the invigorating scent of pine and fresh lavender.

**SIZE (OZ):** 2.5



**REFORMER®**

High Hold • Matte Finish

- Workable texture cream bulks up fine or thin hair and locks styles in place.
- Contains thickening ingredients that leave hair full and healthy-looking.
- No-shine formula leaves a matte, low-maintenance finish ideal for creating gritty, modern hairstyles.

**FRAGRANCE:** Infused with the invigorating scent of pine and fresh lavender.

**SIZE (OZ):** 3



**MATERIAL™**

High Hold • Ultra-Matte Finish

- Thickening ingredients bulk up fine hair, while strong fixatives lock hairstyles in place.
- Contains natural clay that eliminates shine and leaves a dry, ultra-matte finish.
- Great for creating modern, textured hairstyles.

**FRAGRANCE:** Infused with the fresh scent of lemon and aloe.

**SIZE (OZ):** 3



**CLEAN CUT®**

Medium Hold • Semi-Matte Finish

- Delivers pliable hold that lets you shape and reshape styles with lasting control.
- A natural shine and easy finish ensure a fresh, no-nonsense look every time.
- Conditioning ingredients leave all hair types soft and manageable.

**FRAGRANCE:** Infused with the clean scent of citrus and white flowers.

**SIZE (OZ):** 3



*we are*  
**PRODUCT**



**MVRCK**  
LOS ANGELES, CA  
——  
*Uncommon Barbering*

---

# *Uncommon Barbering*

- MADE FOR BARBERS, BY BARBERS
- COMPLETE LINE OF TRUSTED PRODUCTS
- ELEVATED GROOMING EXPERIENCE
- ROOTED IN FUNCTIONALITY & AUTHENTICITY
- ENERGIZING AGAVE CITRUS SCENT

Designed to elevate the grooming experience in the barbershop and at home, MVRCK® embodies the skill and craftsmanship of barbering while supporting the important role barbershops play in their communities.

[Learn more](#)

[INTERESTED IN PURCHASING?](#)

 @mvrckbarbering / #MVRCK

*we are*  
**PRODUCT**

**MVRCK®**



**ORIGINAL POMADE**

Medium Hold • Natural Shine • Water-Soluble

- Creates versatile looks from classic, slick-backed hairstyles to the latest street styles.
- Provides texture and control with a natural-shine finish and an energizing agave citrus scent.
- Water-soluble formula won't flake and washes out easily with shampoo.

**FRAGRANCE:** Infused with an energizing agave citrus scent.

**SIZE (OZ):** 3



**DRY PASTE**

Medium Hold • Matte Finish

- Adds volume, enhances texture and creates sculpted hairstyles.
- Contains a blend of clays, safflower oil and body-building ingredients ideal for thinner hair.
- Gives hair a lightweight, gritty texture that won't flake.

**FRAGRANCE:** Infused with an energizing agave citrus scent.

**SIZE (OZ):** 3



**HIGH HOLD POMADE**

Firm Hold • High Shine

- Great for anything, from waves to a pompadour.
- Provides excellent hold and shine to lock in styles that last all day.
- Won't flake and easily washes out of hair.

**FRAGRANCE:** Infused with an energizing agave citrus scent.

**SIZE (OZ):** 3



**GROOMING CREAM**

Easy Hold • Definition

- Great for creating laid-back, undone looks.
- Quick-hair styling cream adds light hold, soft definition and natural shine to damp or dry hair.
- Contains hair-softening shea butter for lived-in texture.

**FRAGRANCE:** Infused with an energizing agave citrus scent.

**SIZE (OZ):** 5.1



**GROOMING SPRAY**

Flexible Hold • Lightweight

- Lightweight finishing hairspray with thickening agents adds height, buildable hold and natural shine.
- Ideal for adding texture and volume to hair.
- Features a trigger sprayer for no-fuss dispensing.

**FRAGRANCE:** Infused with an energizing agave citrus scent.

**SIZE (OZ):** 4



**SKIN TONIC**

Refreshing • Energizing

- Light facial mist leaves the face feeling fresh and clean while awakening the senses with an agave citrus scent.
- Can be used as a facial toner before shaving for light hydration, or to help reduce the appearance of razor bumps post-shave.
- Cooling menthol and soothing ingredients help calm and hydrate skin.

**FRAGRANCE:** Infused with an energizing agave citrus scent.

**SIZE (OZ):** 7.3



**SKIN + BEARD LOTION**

Moisturizing • Controlling

- Shapes and tames coarse beard hair, from light stubble to full grown and everything in between.
- Rich, hydrating formula with barley seed extract moisturizes skin underneath the beard or scruff.

**FRAGRANCE:** Infused with an energizing agave citrus scent.

**SIZE (OZ):** 2.5



**BEARD OIL**

Softening • Refreshing

- Softening oil helps control and add shine with a blend of shea butter, sunflower seed oil and other hydrating ingredients.
- Lightweight formula tames all beard styles and lengths, from light stubble to full grown and everything in between.

**FRAGRANCE:** Infused with an energizing agave citrus scent.

**SIZE (OZ):** 1

*we are*  
**PRODUCT**



**NEURO**<sup>®</sup>  
INTELLIGENT STYLING

---

## *Intelligent* **STYLING**

- UNIQUE SMARTSENSE TECHNOLOGY
- HEATCTRL<sup>®</sup> THERMAL PROTECTION
- PERFORMANCE-ENGINEERED TOOLS
- MUST-HAVE FOR BLOW-DRYING, SMOOTHING & HEAT STYLING
- TWO-YEAR WARRANTY\*

Thermal tools are a hairdresser's greatest asset in the salon. And when you turn up the heat, protection is key. Creative vision, powered by cutting-edge technology: that's intelligent styling.

[Learn more](#)

[INTERESTED IN PURCHASING?](#)

\*With tool registration at neurohair.com/register.

 @neurohair / #NeuroHair

we are  
**PRODUCT**

## NEURO® STYLING TOOLS

### FLAT IRONS



#1  
BEST  
SELLER

### NEURO® SMOOTH

Advanced Smoothing +  
Straightening

#### CHOOSE FROM:

- **1.25"**: Standard plate size is ideal for all hair types.
- **1.5" XL**: Oversized version perfect for smoothing long, thick or coarse hair.

#### INNOVATIVE FEATURES:

- **Fast**: Heats up to 450°F in 45 seconds and cools quickly with lightning-fast heat recovery.
- **Precise**: Large digital display for easy temperature control.
- **Safe**: Premium titanium plates heat evenly to help minimize damage.
- **Versatile**: Rounded edges make it easy to add waves, curls or flips.
- **Stress-free**: Customizable auto shut-off allows you to set shut-off time up to 120 minutes for added safety.
- **Travel-friendly**: Dual voltage for worldwide use.

#### EXTRAS INCLUDED:

- Two-year warranty + online registration.
- Instructions and safety guide.

\*Based on JPMS™ 2021 tools sales.



### NEURO® STYLE

#### 1" Styling Iron

#### Advanced Straightening + Curling

#### INNOVATIVE FEATURES:

- **Fast**: Heats up to 450°F in 45 seconds and cools quickly with lightning-fast heat recovery.
- **Precise**: Large digital display for easy temperature control.
- **Safe**: Premium titanium plates heat evenly to help minimize damage.
- **Versatile**: Rounded edges make it easy to add waves, curls or flips.
- **Stress-free**: Customizable auto shut-off allows you to set shut-off time up to 120 minutes for added safety.
- **Travel-friendly**: Dual voltage for worldwide use.

#### EXTRAS INCLUDED:

- Two-year warranty + online registration.
- Instructions and safety guide.



### NEURO® HALO

#### 1" Styling Iron

#### Advanced Straightening + Curling

#### INNOVATIVE FEATURES:

- **Fast**: Heats up to 450°F in seconds and cools quickly with lightning-fast heat recovery.
- **Precise**: Interior backlit touch-screen display for easy temperature control.
- **Safe**: Premium titanium plates heat evenly to help minimize damage.
- **Versatile**: Rounded edges make it easy to add waves, curls or flips.
- **Stress-free**: Customizable auto shut-off allows you to set shut-off time up to 120 minutes for added safety.
- **Travel-friendly**: Dual voltage for worldwide use.

#### EXTRAS INCLUDED:

- Two-year warranty + online registration.
- Instructions and safety guide.

## CURLING IRONS

#1  
BEST  
SELLER



### NEURO® UNCLIPPED

#### Advanced Curling

#### CHOOSE FROM:

- **1" Rod**: Standard barrel with one-inch diameter throughout creates beach waves and loose curls.
- **1.25" Cone**: Slightly larger barrel with tapered end creates natural-looking curls.

#### INNOVATIVE FEATURES:

- **Fast**: Heats up to 450°F in seconds and cools quickly with lightning-fast heat recovery.
- **Precise**: Premium titanium surface provides fast, even heat.
- **Safe**: SmartSense microchip monitors iron temperature; with a cool tip for safer styling.
- **Stress-free**: Customizable auto shut-off allows you to set shut-off time up to 120 minutes for added safety.
- **Travel-friendly**: Dual voltage for worldwide use.

#### EXTRAS INCLUDED:

- Two-year warranty + online registration.
- Instructions and safety guide.
- Three-finger protective glove for safe styling.

\*1" Neuro® Unclipped, based on JPMS™ 2021 tool sales.



### NEURO® CURL XL

#### 1.75" Spring Curling Iron

#### Perfect for Polish, Body and Waves

#### INNOVATIVE FEATURES:

- **Fast**: Heats up to 450°F in seconds and cools quickly with lightning-fast heat recovery.
- **Adjustable**: Large digital LCD display for easy temperature control.
- **Precise**: Premium titanium surface provides fast, even heat for consistent curls.
- **Smart**: SmartSense microchip regulates temperature 50 times per second.
- **Stress-free**: Customizable auto shut-off allows you to set shut-off time up to 120 minutes for added safety.
- **Travel-friendly**: Dual voltage for worldwide use.

#### EXTRAS INCLUDED:

- Two-year warranty + online registration.
- Instructions and safety guide.



### NEURO® ANGLE

#### Bendable Titanium Curling Iron

#### Patent-Pending Adjustable Technology

#### CHOOSE FROM:

- **1" Rod**: Creates beach waves and loose curls.
- **1.25" Cone**: Creates perfect, natural-looking curls.

#### INNOVATIVE FEATURES:

- **Fast**: Heats up to 450°F in seconds and cools quickly with lightning-fast heat recovery.
- **Precise**: Premium titanium surface provides fast, even heat for consistent curls.
- **Ergonomic**: With one click, the rod angles from 90° to 180° for easy styling.
- **Smart**: SmartSense microchip regulates temperature 50 times per second.
- **Stress-free**: Customizable auto shut-off allows you to set shut-off time up to 120 minutes for added safety.
- **Travel-friendly**: Dual voltage for worldwide use.

#### EXTRAS INCLUDED:

- Two-year warranty + online registration.
- Instructions and safety guide.
- Three-finger protective glove for safe styling.



### NEURO® GUIDE

#### 1.25" Styling Rod

#### Perfect for Effortless Beach Waves

#### INNOVATIVE FEATURES:

- **Fast**: Heats up to 450°F in 45 seconds and cools quickly with lightning-fast heat recovery.
- **Precise**: Premium titanium surface provides fast, even heat to create effortless waves and curls.
- **Safe**: Retractable comb for snag-free styling.
- **Stress-free**: Customizable auto shut-off allows you to set shut-off time up to 120 minutes for added safety.
- **Travel-friendly**: Dual voltage for worldwide use.

#### EXTRAS INCLUDED:

- Two-year warranty + online registration.
- Instructions and safety guide.

## DRYERS



#1  
BEST  
SELLER

### NEURO® GRIP

#### Comfort + Control

#### INNOVATIVE FEATURES:

- **Powerful**: 1875-watt professional motor for fast drying.
- **Adjustable**: Control heat and air flow separately.
- **Personalized**: 3 heat + 3 speed settings and cool shot.
- **Unique**: Designed flat for easy storage.
- **Travel-friendly**: Lightweight and compact; weighs only a pound.

#### EXTRAS INCLUDED:

- Two-year warranty + online registration.
- Instructions and safety guide.
- Concentrator Nozzle: For directional airflow and controlled styling.
- Compact Collapsible Silicone Diffuser Attachment: Universally fits most dryers.

\*Based on JPMS™ 2021 tool sales.



### NEURO® LIGHT

#### Comfort + Control

#### INNOVATIVE FEATURES:

- **Lightweight**: Weighs just over a pound (1.12 pounds to be exact), making it ideal for travel and hair that takes longer to dry.
- **Powerful**: 1875-watt professional motor for fast drying.
- **Precise**: Digital LED display shows heat and power settings.
- **Smart**: Includes the world's first "Clean Filter" indicator light.
- **Personalized**: 4 heat/speed settings and cool shot button.
- **Unique**: Designed flat for easy storage.

#### EXTRAS INCLUDED:

- Two-year warranty + online registration.
- Instructions and safety guide.
- Concentrator Nozzle: For directional airflow and controlled styling.
- Compact Collapsible Silicone Diffuser Attachment: Universally fits most dryers.



### NEURO® HALO

#### High-Tech Hair Dryer

#### INNOVATIVE FEATURES:

- **Powerful**: 1875-watt professional motor for fast drying.
- **Personalized**: 3 heat settings, 3 airflow settings, an ion setting and cool shot.
- **Enhanced**: Negative ion generator helps reduce frizz and enhances shine.
- **Precise**: Backlit touch-screen display for easy temperature control.
- **Smart**: Includes the world's first "Clean Filter" indicator light.

#### EXTRAS INCLUDED:

- Two-year warranty + online registration.
- Instructions and safety guide.
- Concentrator Nozzle: For directional airflow and controlled styling.
- Matte black diffuser can be used to blow-dry curly hair or to add volume at the roots.

## STYLING TOOLS



NEW



### NEURO® SLEEK

#### Smoothing Hot Brush

#### Smooth Styles + Supercharged Shine

#### INNOVATIVE FEATURES:

- **Fast**: SmartSense microchip and premium heaters ensure consistent, optimal heat for fast styling.
- **Ionic**: Ion generator delivers millions of negative ions to help enhance shine and reduce frizz.
- **Gentle**: Optimized bristle design provides ideal tension for a gentle glide and optimal results without snagging.
- **Personalized**: 5 digitally-controlled heat settings offer brilliant results for all hair types and textures.
- **Versatile**: Ceramic-coated bristles provide a smooth, lasting finish; curved brush edges add bends and body to any look.
- **Stress-free**: 1-hour auto-shut off for safe styling and peace of mind.
- **Comfortable**: Soft-touch finish provides comfortable, non-slip grip.
- **Ergonomic**: Lightweight body and ergonomic handle make styling a breeze.
- **Travel-friendly**: Automatic dual voltage for worldwide use.

#### EXTRAS INCLUDED:

- Two-year warranty + online registration.
- Instructions and safety guide.

## BRUSHES



### NEURO® ROUND BRUSH

#### SIZES S, M, L

#### CHOOSE FROM:

- Small (33mm).
- Medium (43mm).
- Large (53mm).

#### INNOVATIVE FEATURES:

- Vented titanium barrels.
- Bristles are heat-resistant up to 500°F (260°C).
- Premium IsoTherm titanium outperforms ceramic by retaining heat and reducing drying time.
- Nylon anti-static corkscrew bristles create a smooth finish and add shine.
- Seamless design with snag-free edges.
- No-slip soft-touch handle for easy grip.
- Ergonomic, lightweight and perfectly balanced.
- Magnetic handle cap sits brush upright.

*we are*  
**PRODUCT**

**NEURO™  
LIQUID**

**THE NEURO™ FRAGRANCE:**

Seductive scent entices with rich gourmand and succulent fruity notes of black currant, pear skin, praline, creamy iris, orange blossom, jasmine, sheer heliotrope, almond crème and tonka bean.



**CARE**



**NEURO™ LATHER  
HEATCTRL® SHAMPOO**

With Exclusive HeatCTRL® Technology

- Creates an ideal foundation for using thermal hair styling tools.
- Color-safe shampoo gently cleanses heat-stressed strands.
- Removes dirt and buildup caused by hair styling products.

**SIZES (OZ): 9.2, 33.8**



**NEURO™ RINSE  
HEATCTRL®  
CONDITIONER**

With Exclusive HeatCTRL® Technology

- Rich, color-safe conditioner replenishes hair and delivers advanced thermal protection to help protect against heat damage.
- Exclusive HeatCTRL® technology protects the cuticle and reduces friction on heat-stressed strands while helping to reduce the rate of heat transfer when using thermal styling tools.
- Hydrating formula leaves hair soft and manageable.

**SIZES (OZ): 9.2, 33.8**



**NEURO™ REPAIR  
HEATCTRL®  
TREATMENT**

With Exclusive HeatCTRL® Technology

**Up to 4.5x More Condition\***

- Repair and protect hair from the daily stresses of heat styling.
- Exclusive HeatCTRL® technology helps provide exceptional thermal protection and intensive repair for heat-stressed strands while reducing the rate of heat transfer when using thermal styling tools.
- Rich formula restores moisture and leaves hair smooth and conditioned with brilliant shine.

**SIZE (OZ): 5.1**



**NEURO™ RESTORE  
HEATCTRL®  
OVERNIGHT REPAIR**

With Exclusive HeatCTRL® Technology

**63% Less Breakage\*\***

- Treat hair while you sleep and help strands recover overnight from the stresses of daily heat styling.
- Reparative hair mask with HeatCTRL® technology mends damaged strands, replenishes moisture, and smooths and seals the cuticle, while helping protect against future damage.
- Rich, replenishing formula leaves all hair types softer and more manageable without leaving residue behind.

**SIZE (OZ): 2.5**

**STYLE**



**NEURO™ PRIME  
HEATCTRL®  
BLOWOUT PRIMER**

With Exclusive HeatCTRL® Technology

**Prevents Damage up to 86%\***

- Strand-perfecting primer controls your blowout for shiny, silky-smooth results.
- Exclusive HeatCTRL® technology reduces the rate of heat transfer from roots to ends when blow-drying.
- Delivers advanced thermal protection to help protect against heat damage from hair dryer usage.

**SIZE (OZ): 4.7**



**NEURO™ RESHAPE  
HEATCTRL®  
MEMORY STYLER**

With Exclusive HeatCTRL® Technology

**2 Looks. 1 Application. 0 Damage.\*\***

- Heat-activated styling cream with unique reworkable memory lets you style and then style again when using heat tools.
- Take your hair from curly to straight to wavy with no additional product application.
- Exclusive HeatCTRL® technology reduces the rate of heat transfer from roots to ends when using thermal styling tools.

**SIZE (OZ): 4.7**



**NEURO™ LIFT  
HEATCTRL®  
VOLUME FOAM**

With Exclusive HeatCTRL® Technology

- Volumizing hair mousse delivers body, conditioning and medium hold while advanced thermal protection helps defend against heat damage.
- Lightweight formula provides added lift and fullness.
- Exclusive HeatCTRL® technology reduces the rate of heat transfer from roots to ends when blow-drying.

**SIZE (OZ): 6.7**



**NEURO™ PROTECT  
HEATCTRL® IRON  
HAIRSPRAY**

With Exclusive HeatCTRL® Technology

**Blocks Humidity for up to 8 Hours\*\*\***

- Lightweight hairspray protects hair from damage caused by styling with heat tools using exclusive HeatCTRL® technology that reduces the rate of heat transfer from roots to ends.
- Shine and hold agents lock in luminous looks.
- Helps resist humidity and blocks out frizz.

**SIZE (OZ): 6**

Prevents thermal damage up to **86%\***



\*When using Neuro™ Repair. Product was tested by an established, independent third-party laboratory. Results may vary.  
\*\*As compared to untreated hair. Product was tested by an established, independent third-party laboratory. Results may vary.

\*When using Neuro™ Prime. Product was tested by an established, independent third-party laboratory. Results may vary.  
\*\*As compared to untreated hair. Product was tested by an established, independent third-party laboratory. Results may vary.  
\*\*\*When using Neuro™ Protect. Products were tested by an established, independent third-party laboratory. Results may vary.

# Regenerative Roots.

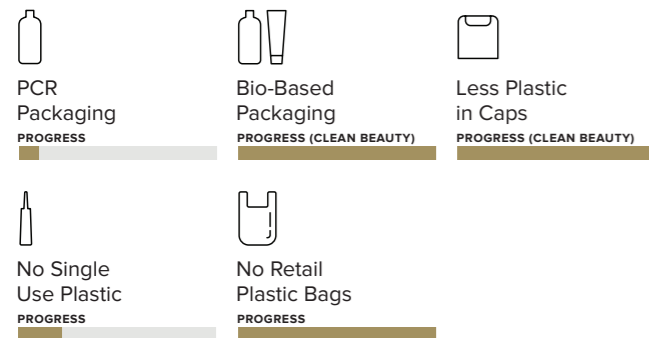
We honor our Regenerative Roots, our founders' values, and our sustainability leadership across the generations.

Our passion for hair and compassion for people and the planet is our priority, and we aim to take positive and impactful actions that leave the ecosystems and communities where we operate in a better place than how we found them.

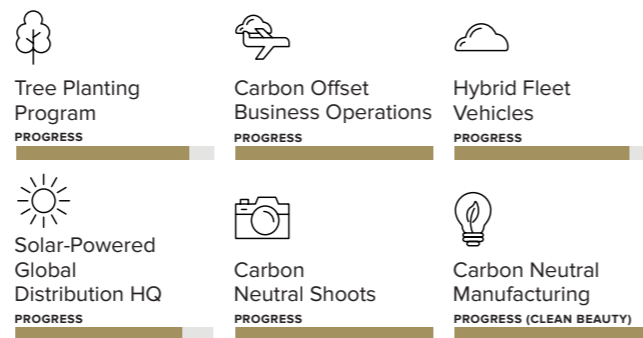


Learn more

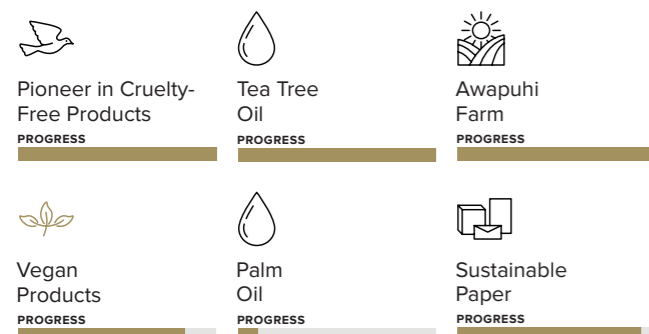
## REDUCE VIRGIN PLASTIC\*



## REDUCE CARBON FOOTPRINT\*



## RESPONSIBLE SOURCING\*



## MINIMIZE WASTE TO LANDFILL\*



\*Progress as of December 2022

JOHN PAUL MITCHELL SYSTEMS®